



EASTWOOD ANDREWS



1/21 Freesia Court Whittington VIC

2 1 2

Situated only minutes from local shops, schools, public transport and sporting reserves, 10 minutes to Geelong CBD and coastal areas, this freestanding townhouse is the perfect choice for an investor with a potential rent of \$280/week. Comprising a spacious and light filled lounge with split system AC and gas heater, an adjoining kitchen/dining area, bathroom with separate bath and shower, separate toilet, 2 generous bedrooms both with built in robes. There is a double garage, one door is remote controlled and there is a rear roller door to access the private rear yard. Corner allotment approximately 374sqm. Call today for further details, we don't expect this property to be available for long!

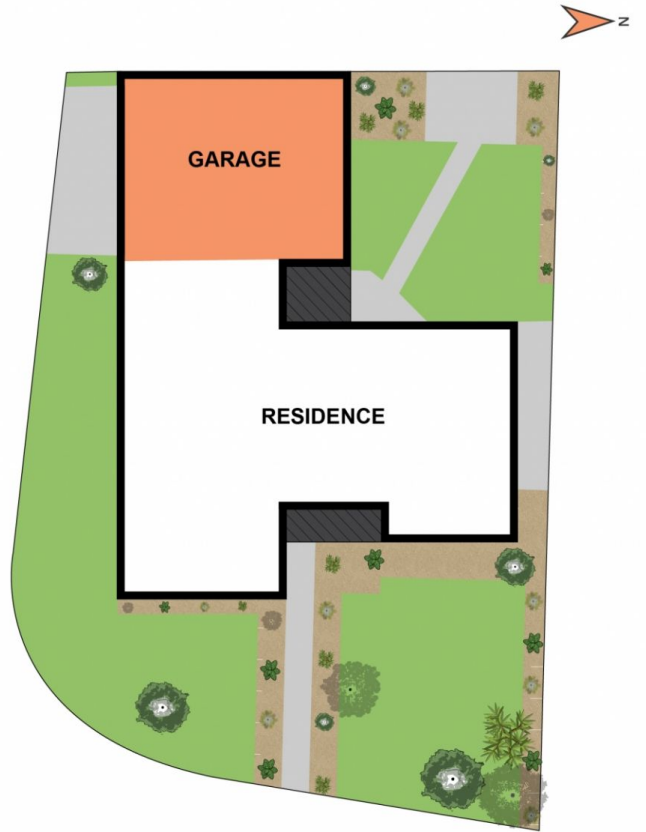
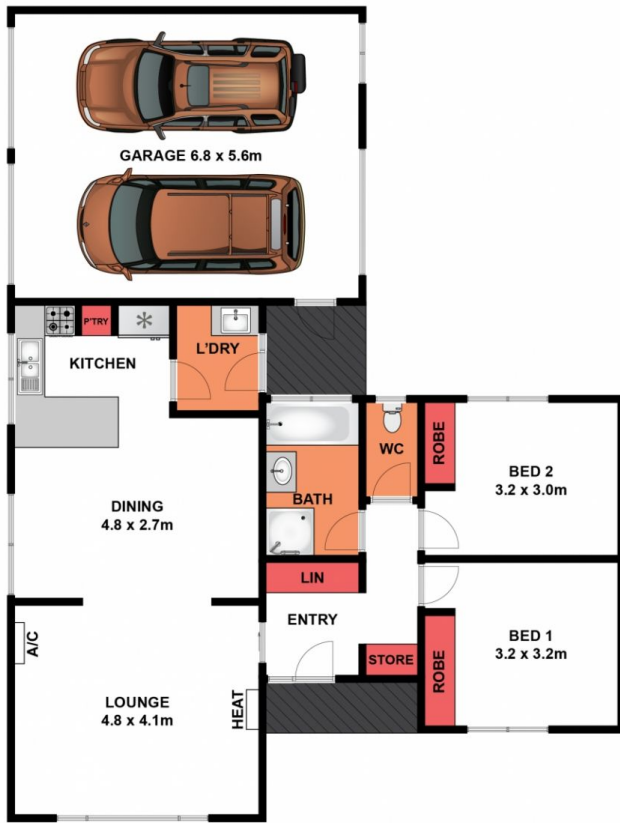
Price : \$ 345,000
Land Size : 374 sqm
View : <https://www.eastwoodandrews.com.au/sale/vic/geelong-district/whittington/residential/townhouse/5927649>



Nicole Andrews
03 5201 0575



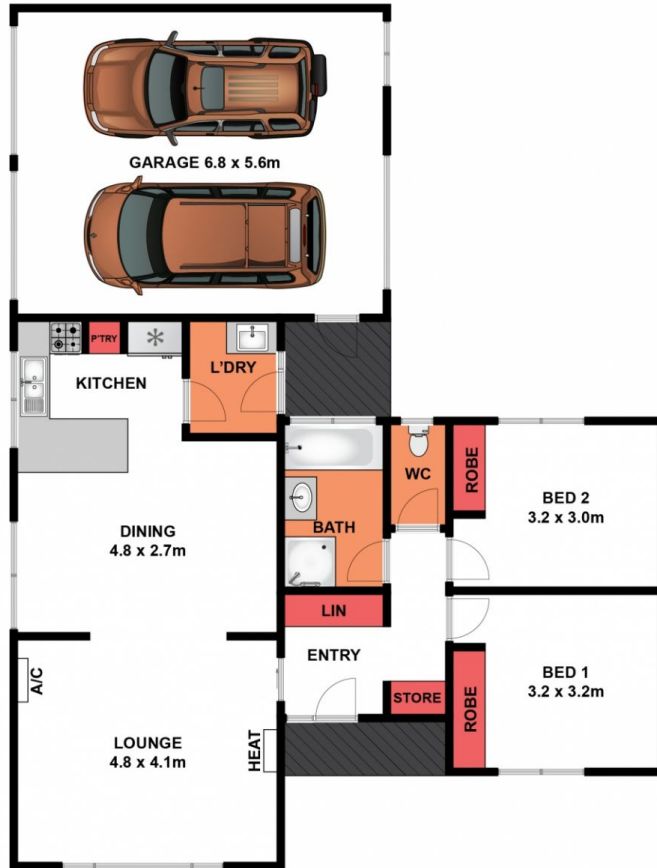
Amanda Frick
03 52010575



SITE PLAN

Whilst bwrn.com.au has made every attempt to ensure the accuracy of the floor plan contained here, measurements are approximate and no responsibility is taken for any error, omission, or mis-statement. This plan is for illustrative purposes only.

1/21 Freesia Court, Whittington



Whilst bwrn.com.au has made every attempt to ensure the accuracy of the floor plan contained here, measurements are approximate and no responsibility is taken for any error, omission, or mis-statement. This plan is for illustrative purposes only.

1/21 Freesia Court, Whittington