



EASTWOOD ANDREWS



11 Summit Avenue Belmont VIC

2 2 1

Why rent when you can purchase a home of your own at this affordable price level.

Minutes to local schools, shops, recreation reserves, 10 minutes to Geelong CBD and within easy access to the Melbourne Ring Rd and train stations the convenience is the main reason this area is so sought after.

Situated on its own allotment of approximately 301sqm, the home comprises a formal lounge with sliding doors opening out the a decked entertaining area, kitchen meals with plenty of cupboard space and a gas stove, 2 bedrooms, master with walkinrobe and ensuite. The main bathroom provides a shower, modern vanity and 2nd toilet.

Outdoors is a secure and private lawn area and off street parking for one car.

This home makes the perfect choice for a first home buyer, downsizer or investor, with a potential rental income of \$340/week.

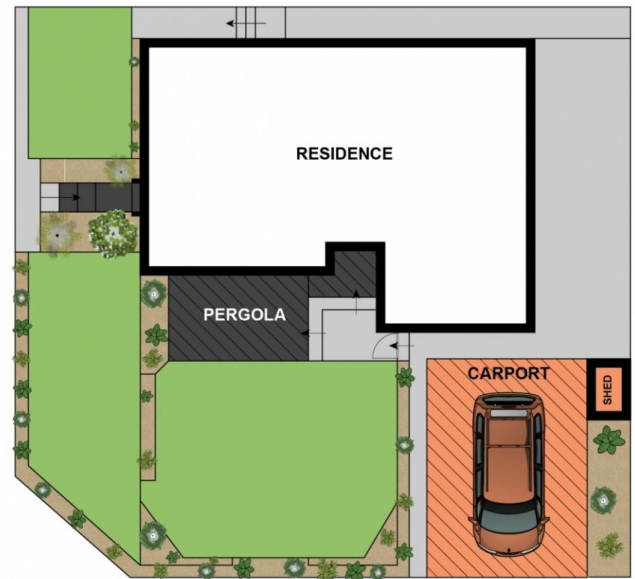
Price : \$ 365,000
Land Size : 301 sqm
View : <https://www.eastwoodandrews.com.au/sale/vic/geelong-district/belmont/residential/town-house/5927662>



Nicole Andrews
03 5201 0575



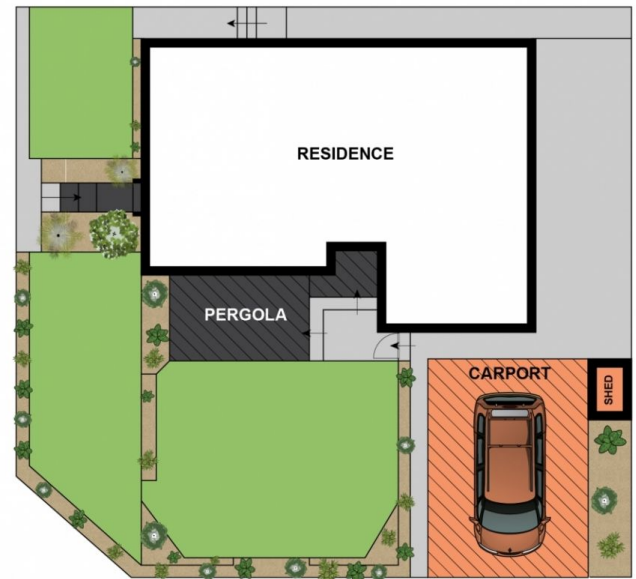
Amanda Frick
03 52010575



Site Plan

Whilst bwrn.com.au has made every attempt to ensure the accuracy of the floor plan contained here, measurements are approximate and no responsibility is taken for any error, omission, or mis-statement. This plan is for illustrative purposes only.

11 Summit Avenue, Belmont



Site Plan

Whilst bwrn.com.au has made every attempt to ensure the accuracy of the floor plan contained here, measurements are approximate and no responsibility is taken for any error, omission, or mis-statement. This plan is for illustrative purposes only.

11 Summit Avenue, Belmont