



EASTWOOD ANDREWS



27-29 Washington Gardens Leopold VIC

6 2 2

If you are searching for a spacious family home on a large allotment, then look no further. This quality built home of approx 40sq zoned living space has it all.

Situated in one of the best streets in Leopold, the wide entrance hallway accesses a formal lounge/dining room and study at the front of the home. There is a large, light filled open plan kitchen/dining/family area with a Coonara wood heater which would undoubtedly be the central hub for all the family to gather. The stunning handmade solid timber kitchen provides plenty of cupboard and bench space, stainless steel gas cooktop and electric oven, dishwasher and large pantry. This area overlooks the side and rear yard, making it easy to keep an eye on children playing outdoors whilst cooking dinner or relaxing inside.

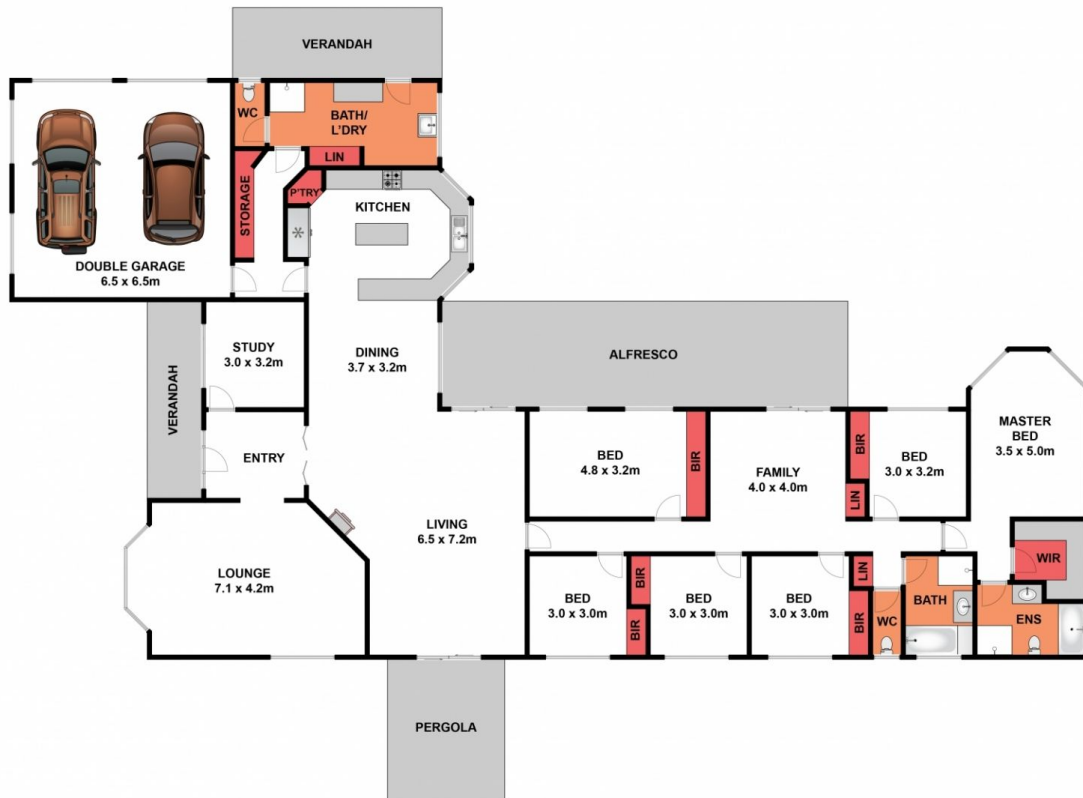
Towards the rear of the home are the 6 bedrooms, 5 with built in robes, master with ensuite and walk in robe. There is a third living area adjoining these bedrooms, making the

Land Size : 1429 sqm

View : <https://www.eastwoodandrews.com.au/sale/vic/geelong-district/leopold/residential/house/5927709>



Nicole Andrews
03 5201 0575



Whilst bwrm.com.au has made every attempt to ensure the accuracy of the floor plan contained here, measurements are approximate and no responsibility is taken for any error, omission, or mis-statement. This plan is for illustrative purposes only.

27 Washington Gardens, Leopold

