



EASTWOOD ANDREWS



6 Park Crescent South Geelong VIC

3 1 1

Situated in undoubtedly one of the Geelong region's most sought after suburbs this Californian Bungalow is offered in original and very neat condition, providing the opportunity for its new owner to renovate and restore this home back to its former glory.

With limited homes sold in this tightly held suburb and few properties currently on the market, this home is one not to be missed. Fewer and fewer character homes in original condition are available and it has taken over 30 years for the current owner to decide it is time to sell.

The close proximity to the CBD, Geelong's finest selection of schools, GMHBA Stadium for football enthusiasts, Kardinia Pool, the Barwon River, walking distance to the train station and easy access to Melbourne for commuters are some of the reasons this suburb is in such high demand.

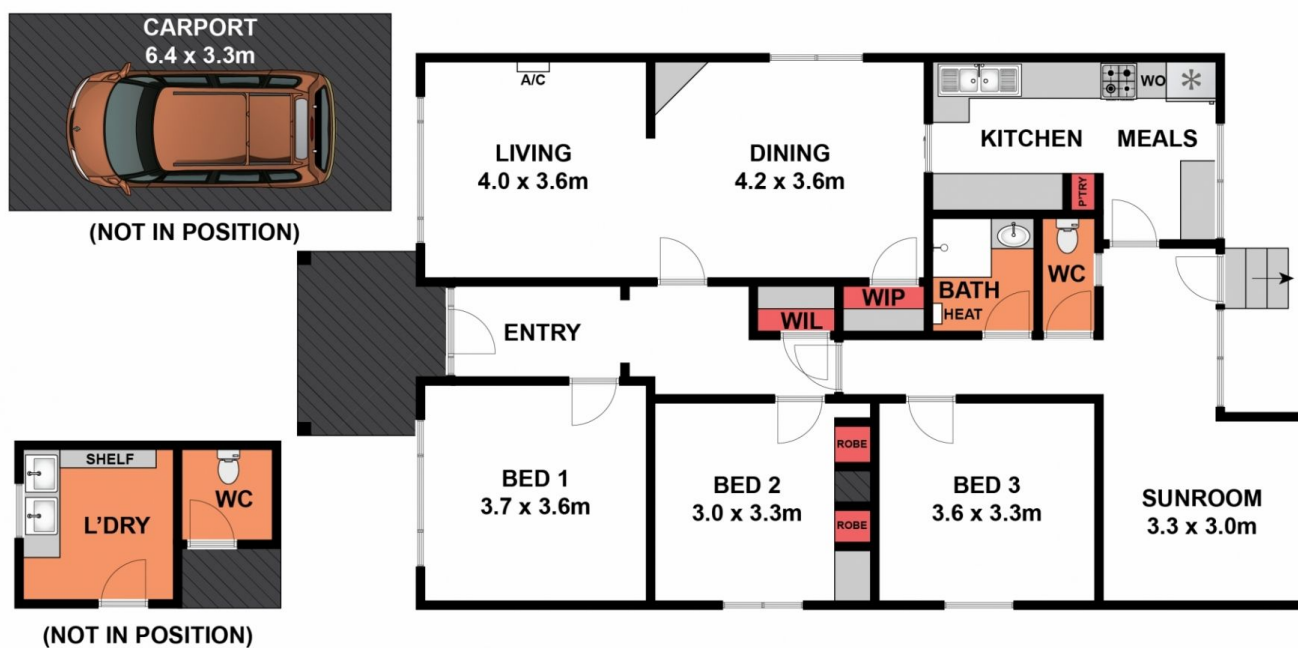
With many original features intact including leadlight

Price : \$ 530,000
Land Size : 379 sqm
View : <https://www.eastwoodandrews.com.au/sale/vic/geelong-district/south-geelong/residential/house/5927711>



Nicole Andrews
03 5201 0575

<https://www.eastwoodandrews.com.au>



Whilst bwrn.com.au has made every attempt to ensure the accuracy of the floor plan contained here, measurements are approximate and no responsibility is taken for any error, omission, or mis-statement. This plan is for illustrative purposes only.

6 Park Crescent, South Geelong



Whilst bwrn.com.au has made every attempt to ensure the accuracy of the floor plan contained here, measurements are approximate and no responsibility is taken for any error, omission, or mis-statement. This plan is for illustrative purposes only.

6 Park Crescent, South Geelong