



EASTWOOD ANDREWS



15 Lansbury Crescent Highton VIC

5 2 2

Situated high on the hill with million dollar views over Highton and coastal areas, this stunning family residence provides plenty of living space over two levels. Minutes to the Highton shopping village, local schools and within easy access to the Melbourne Ring Rd this home will suit families and those who wish to commute to Melbourne for work. Only ten minutes to Geelong CBD and waterfront, and 10 minutes to coastal areas, the convenience of this location is what makes it such a sought after suburb.

Comprising a wide entrance foyer, formal lounge/dining, an open plan kitchen/dining/family area bathed in an abundance of light and overlooking the rear yard/paved entertaining area.

The well appointed kitchen provides s/s appliances including a gas cooktop, electric wall oven and dishwasher and plenty of cupboard space. There is a laundry and powder room downstairs as well as a 5th bedroom with

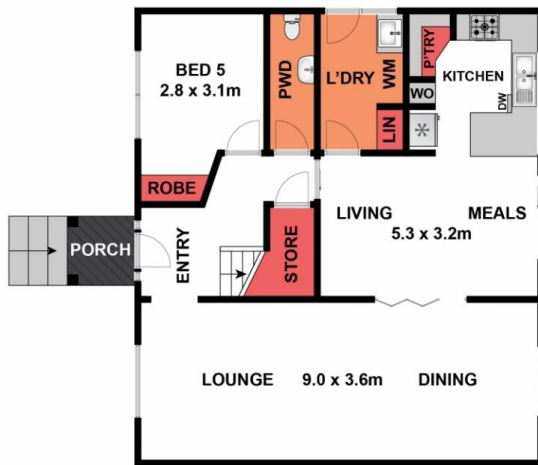
Land Size : 663 sqm
View : <https://www.eastwoodandrews.com.au/sale/vic/geelong-district/highton/residential/house/5927723>



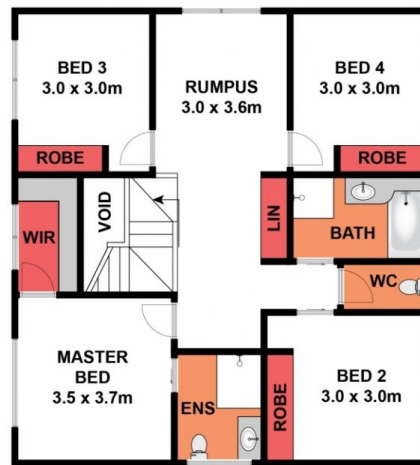
Nicole Andrews
03 5201 0575



Amanda Frick
03 52010575



GROUND LEVEL



UPPER LEVEL

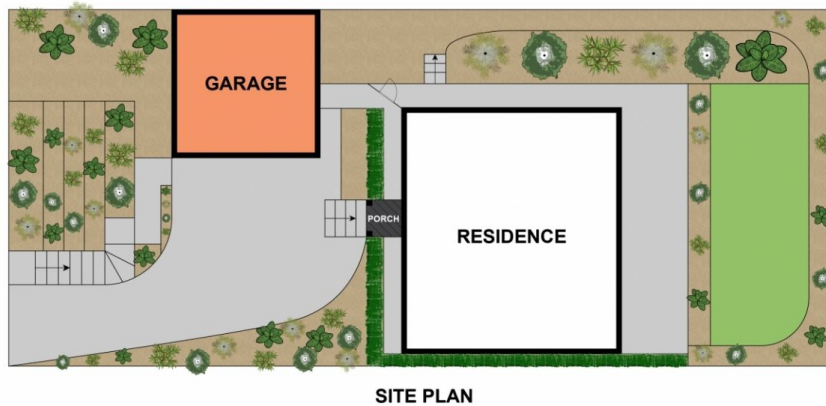
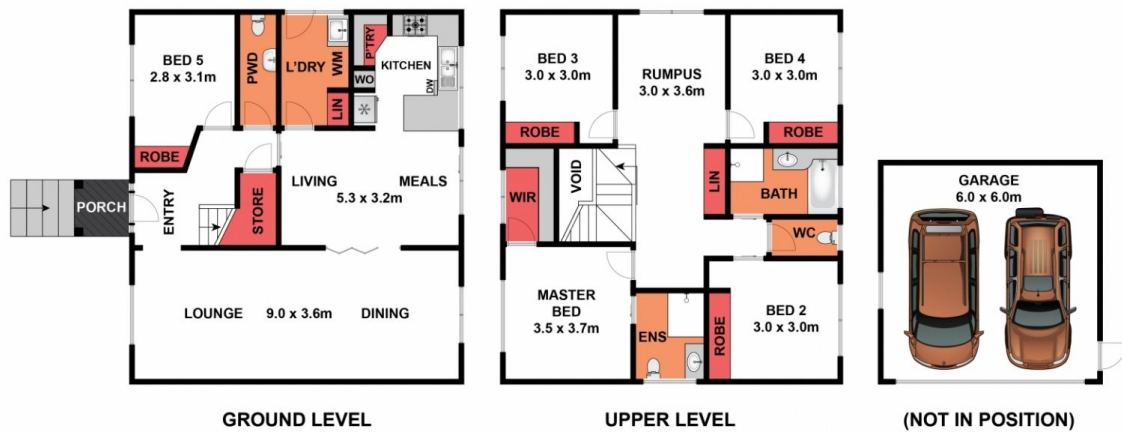


(NOT IN POSITION)

Whilst bwrn.com.au has made every attempt to ensure the accuracy of the floor plan contained here, measurements are approximate and no responsibility is taken for any error, omission, or mis-statement. This plan is for illustrative purposes only.

15 Lansbury Crescent, Highton

EA
EASTWOOD ANDREWS



Whilst bwrn.com.au has made every attempt to ensure the accuracy of the floor plan contained here, measurements are approximate and no responsibility is taken for any error, omission, or mis-statement. This plan is for illustrative purposes only.

15 Lansbury Crescent, Highton