



EASTWOOD ANDREWS



### 19 East End Crescent St Albans Park VIC

3 2 4

Situated in a quiet street, 10 minutes to Geelong CBD, coastal areas, local shops and schools, this location is sure to appeal to both owner occupiers and investors. Built by a quality builder Bell and Fulton, this double brick home has been modernised and well maintained over the years. On your first step inside you will be impressed by the wide entry, spacious L-shaped dining/lounge with bamboo timber flooring and a gas wall furnace. The updated kitchen/family has a glass splashback, stainless steel gas cooktop, electric oven and a dishwasher. There are three generous bedrooms each with built in robes. The master is located at the front of the home with its own ensuite. The family bathroom has a separate bath and shower and separate toilet.

You will be fascinated by the stunning undercover area complete with a ceiling fan and TV point, ideal for combined indoor/outdoor entertaining. The perfect lawn

**Price** : \$ 540,000  
**Land Size** : 717 sqm  
**View** : <https://www.eastwoodandrews.com.au/sale/vic/geelong-district/st-albans-park/residential/house/5927772>



**Nicole Andrews**  
03 5201 0575

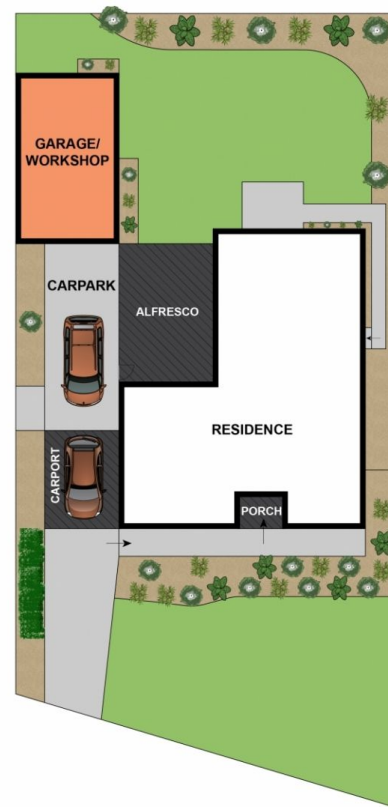
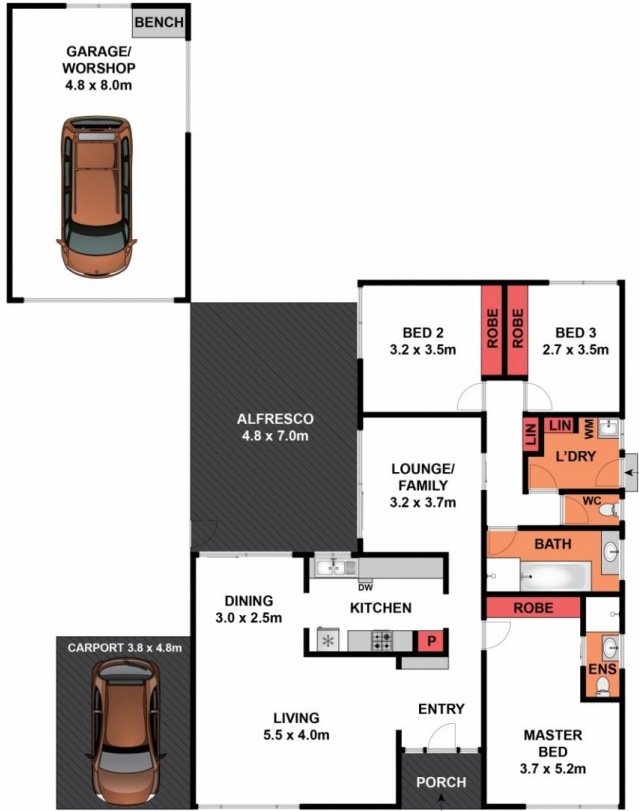


**Andrew Crowhurst**  
03 5201 0575



Whilst [bwrn.com.au](http://bwrn.com.au) has made every attempt to ensure the accuracy of the floor plan contained here, measurements are approximate and no responsibility is taken for any error, omission, or mis-statement. This plan is for illustrative purposes only.

## 19 East End Crescent, Saint Albans Park



SITE PLAN

Whilst [bwrn.com.au](http://bwrn.com.au) has made every attempt to ensure the accuracy of the floor plan contained here, measurements are approximate and no responsibility is taken for any error, omission, or mis-statement. This plan is for illustrative purposes only.

## 19 East End Crescent, Saint Albans Park