



EASTWOOD ANDREWS



48 Pioneer Road Grovedale VIC

3 1 2

Situated within walking distance to Waurm Ponds shopping Centre, medical facilities, local schools and public transport, and only a 10 minute drive to Torquay or into town, this home is close to everything.

Comprising a formal lounge, kitchen/dining with gas wall oven and electric cooktop. There are 3 bedrooms each with built in robes and the bathroom provides a separate bath and shower, and separate toilet.

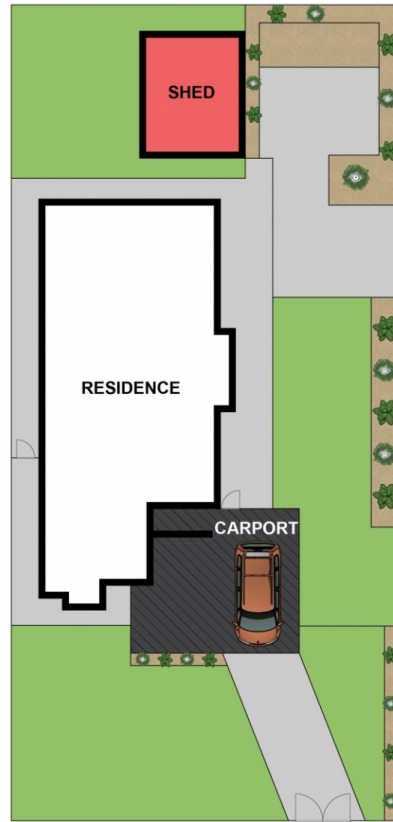
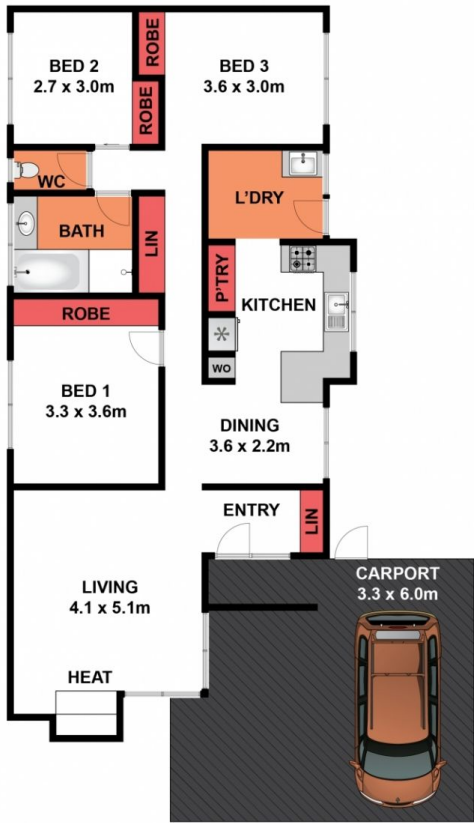
Outdoors is a carport for undercover parking and a secure rear yard with large steel storage shed. Allotment approx 580sqm.

Land Size : 580 sqm

View : <https://www.eastwoodandrews.com.au/lease/vic/geelong-district/grovedale/residential/house/5939187>



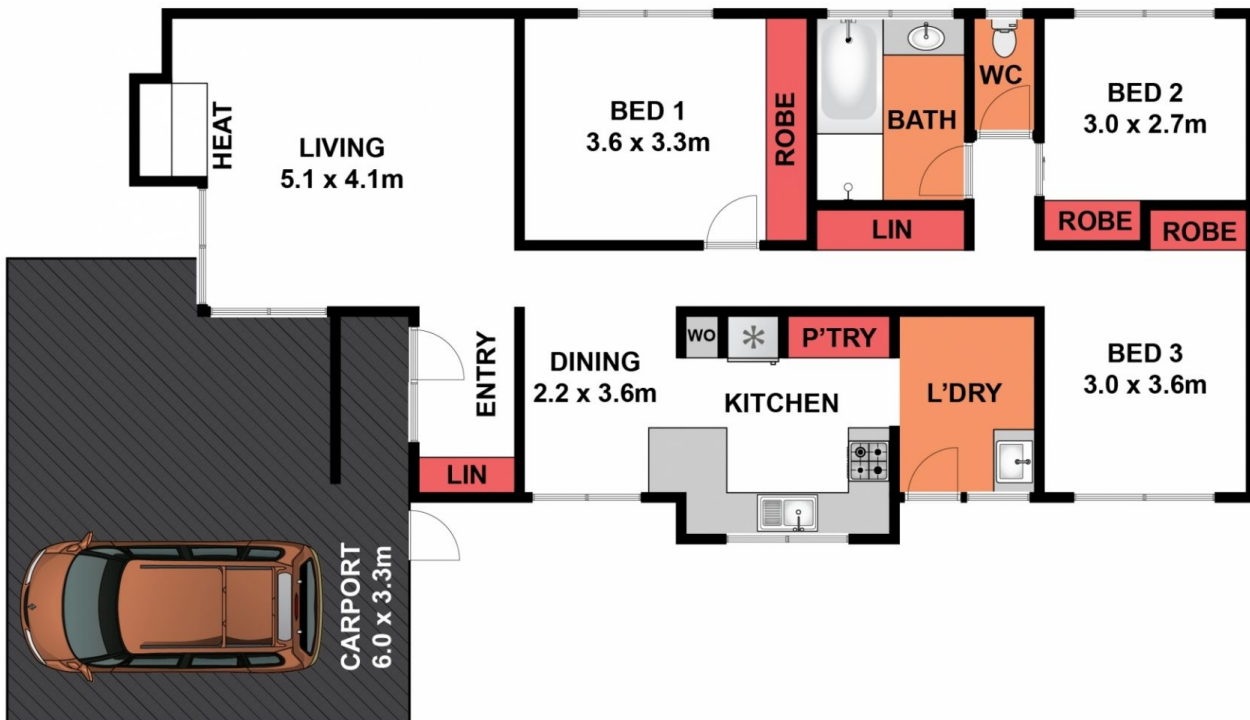
Melanie Backer
03 5201 0575



SITE PLAN

Whilst bwr.com.au has made every attempt to ensure the accuracy of the floor plan contained here, measurements are approximate and no responsibility is taken for any error, omission, or mis-statement. This plan is for illustrative purposes only.

48 Pioneer Road, Grovedale



Whilst bwrn.com.au has made every attempt to ensure the accuracy of the floor plan contained here, measurements are approximate and no responsibility is taken for any error, omission, or mis-statement. This plan is for illustrative purposes only.

48 Pioneer Road, Grovedale