



EASTWOOD ANDREWS



392 Ryrie Street East Geelong VIC

3 1

Literally 200m from the Geelong waterfront, with cafes, boutique shops and the Geelong CBD on your doorstep, this stunning Edwardian home will delight the fussiest of buyers.

Price : \$ 915,000

View : <https://www.eastwoodandrews.com.au/sale/vic/geelong-district/east-geelong/residential/house/5987240>

This property is perfect for those needing proximity to both Deakin University Hospital and St John of God Hospital or anyone working along the Waterfront.

The home boasts three generous bedrooms, all with original fireplaces, two with built in robes and split systems. The open plan kitchen, dining, lounge area is spacious enough for the whole family to sit around the gas log fireplace, or bask in the cool shade, with another split system AC. Featuring a high end renovation with luxury gas cook top and electric pyrolytic oven, timber benchtops, Black kitchen fittings, Barn doors, dishwasher and walk in pantry, a 2 way bathroom with access to master

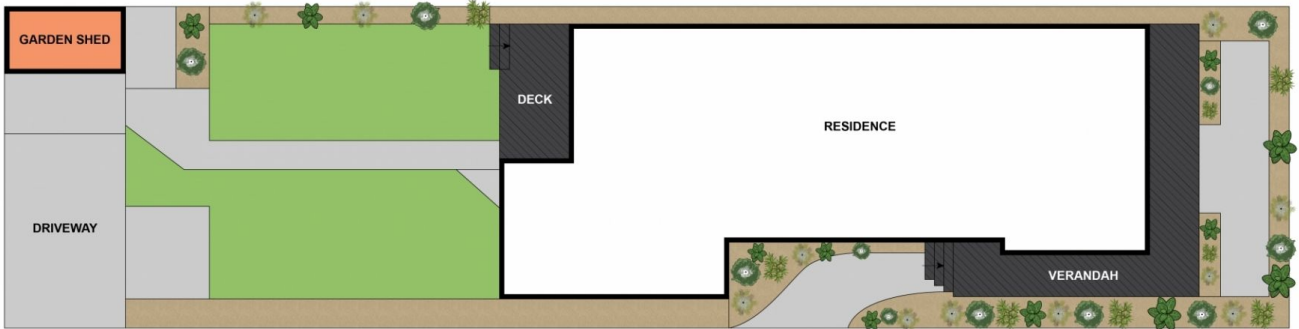


Amanda Frick
03 52010575



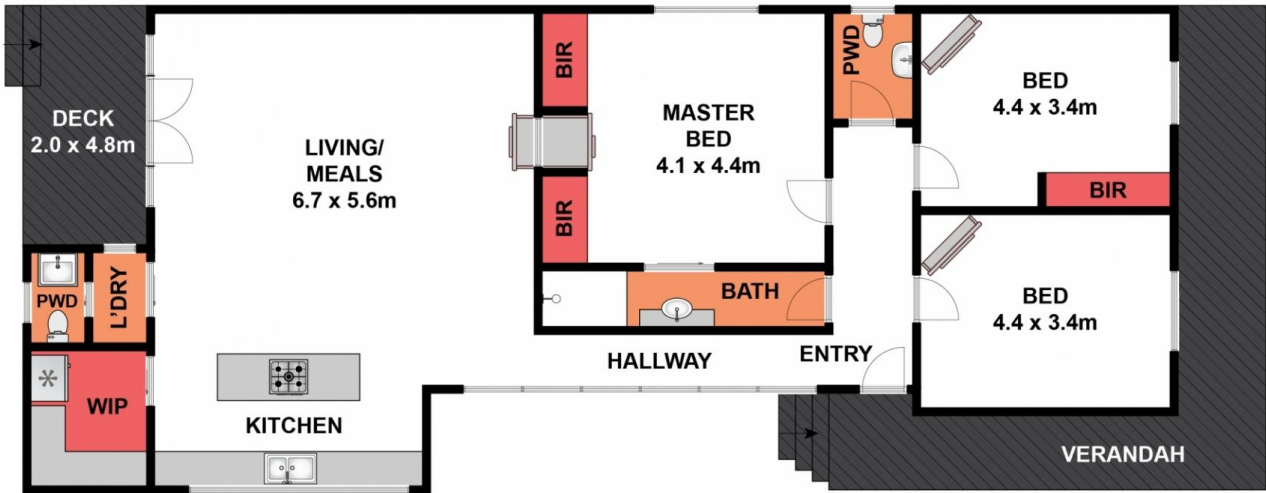
Andrew Crowhurst
03 5201 0575

<https://www.eastwoodandrews.com.au>



Whilst bwrn.com.au has made every attempt to ensure the accuracy of the floor plan contained here, measurements are approximate and no responsibility is taken for any error, omission, or mis-statement. This plan is for illustrative purposes only.

392 Ryrie Street, East Geelong



Whilst bwr.com.au has made every attempt to ensure the accuracy of the floor plan contained here, measurements are approximate and no responsibility is taken for any error, omission, or mis-statement. This plan is for illustrative purposes only.

392 Ryrie Street, East Geelong