



EASTWOOD ANDREWS



15 Barunah Court Leopold VIC

3 2 2

Prior registration to inspect by appointment only at advertised times.
No entry permitted without prior appointment.

Land Size : 655 sqm
View : <https://www.eastwoodandrews.com.au/sale/vic/geelong-district/leopold/residential/house/6440725>

Situated at the top of a quiet court with a reserve right next door, this is an ideal home for a young family or a savvy investor to add to their portfolio. Situated almost a stone's throw from the Leopold Sportsmans Club for close proximity bistro dining, and mere minutes from Gateway Plaza for all your shopping needs, as well as walking distance to local schools.

Comprised of 2 formal living areas, each with a gas wall furnace, one with reverse cycle split system, as well as an open fireplace. The kitchen boasts a 900mm gas cooktop and wall oven with ample cupboard space. The 3 bedrooms all have built in floor to ceiling wardrobes, and the master with ensuite. The main bathroom features both



Matt Eastwood
5201 0575



Amanda Frick
03 52010575

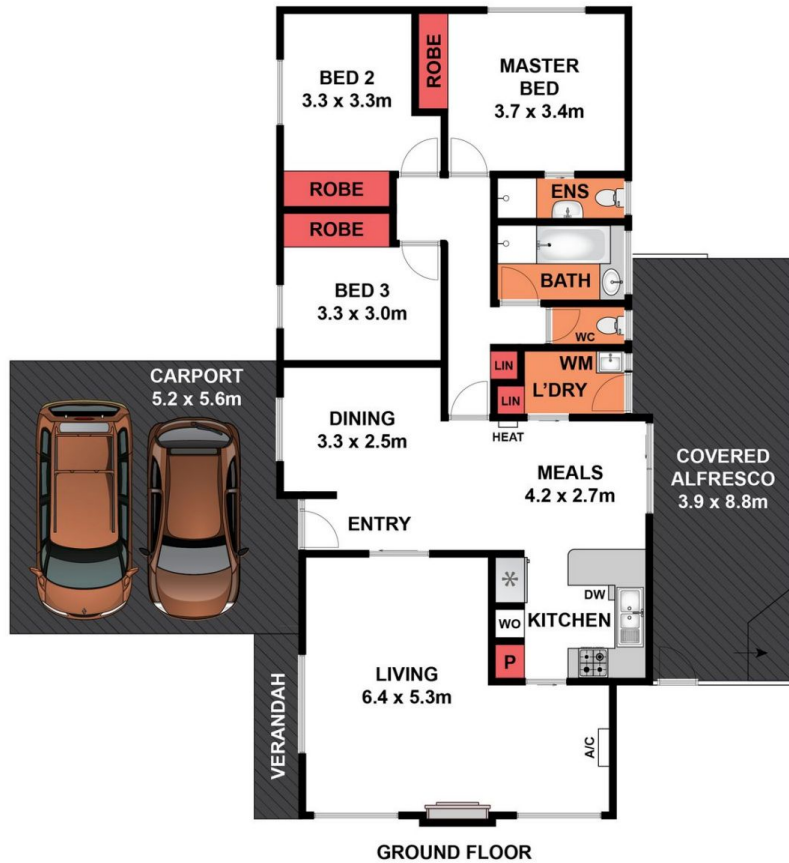
<https://www.eastwoodandrews.com.au>



SITE PLAN

Whilst bwrn.com.au has made every attempt to ensure the accuracy of the floor plan contained here, measurements are approximate and no responsibility is taken for any error, omission, or mis-statement. This plan is for illustrative purposes only.

15 Barunah Court, Leopold



Whilst bwrn.com.au has made every attempt to ensure the accuracy of the floor plan contained here, measurements are approximate and no responsibility is taken for any error, omission, or mis-statement. This plan is for illustrative purposes only.

15 Barunah Court, Leopold