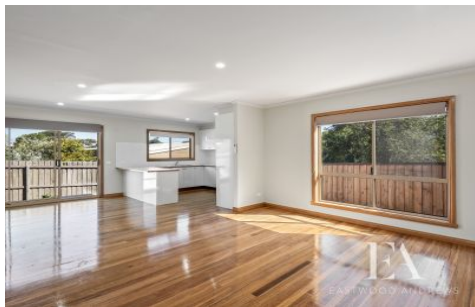




EASTWOOD ANDREWS



### 18 Athlon Avenue Leopold VIC

3 2 2

This brand new 3 bedroom townhouse is situated in a quiet position, minutes to locals shops and a quick drive to Leopold Village, sporting reserves and the local primary school.

Situated on a low maintenance allotment, the property comprises of an open plan kitchen/dining/family, 3 large bedrooms - one with ensuite and walk in robe, remaining two both have built in robes. The family bathroom provides separate bath and shower and separate toilet. Stunning polished floorboards throughout, split system heating/cooling. The double length garage is remote controlled and has a kitchenette. Call and make your appointment to inspect today, registration and ID required, QR code registration on day of inspection mandatory.

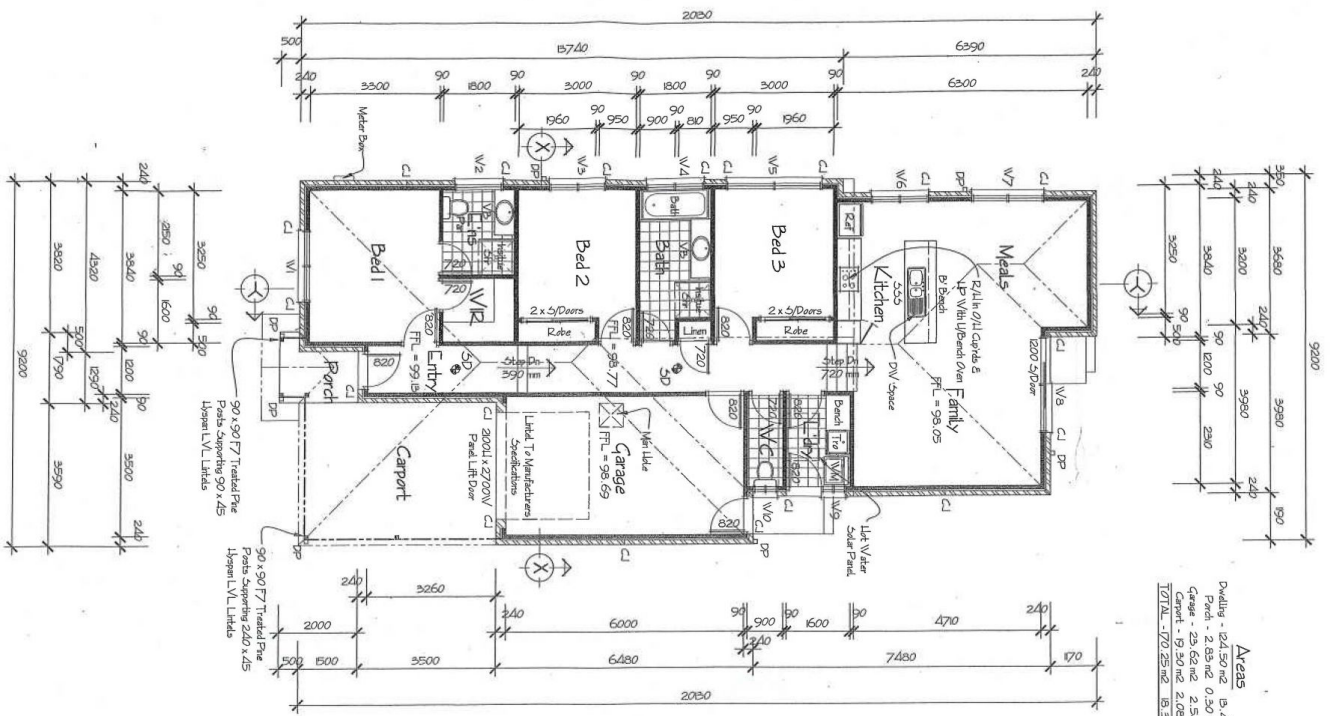
**View :** <https://www.eastwoodandrews.com.au/lease/vic/geelong-district/leopold/residential/townhouse/6675436>



**Hailey Wyld**  
03 5201 0575



**Jessie Lin**  
03 5201 0575



**Areas**

Dwelling	1241.50 m <sup>2</sup>	13,140
Porch	2.83 m <sup>2</sup>	0.30 m <sup>2</sup>
Garage	25.82 m <sup>2</sup>	2.78 m <sup>2</sup>
Carport	19,220 m <sup>2</sup>	2,080
<b>TOTAL</b>	<b>17,029.15 m<sup>2</sup></b>	<b>1,828</b>