



EASTWOOD ANDREWS



### 31 Gwyther Road Highton VIC

4 3 2

Situated in a peaceful street in central Highton, this double storey family home has recently been stylishly renovated throughout and is sure to attract a lot of attention being only minutes to local schools, shops, Deakin Uni and sporting reserves, within catchment zone for Belmont High School, easy access to the Ring Rd and only 10 minutes to Geelong CBD

Comprising a large open plan kitchen/dining/living with stunning floorboards, a split system AC for all year comfort and filled with natural light making the ideal space for relaxed family catchups. The kitchen provides plenty of bench and cupboard space, s/s dishwasher, gas cooktop, electric oven and a large pantry cupboards. There are a total of 4 bedrooms, three on entry level and master upstairs, with walk in robe and ensuite. The upper level also has a 2nd living area/parent's retreat with views towards Geelong.

**Price** : \$ 850,000  
**Land Size** : 734 sqm  
**View** : <https://www.eastwoodandrews.com.au/sale/vic/geelong-district/highton/residential/house/6734309>



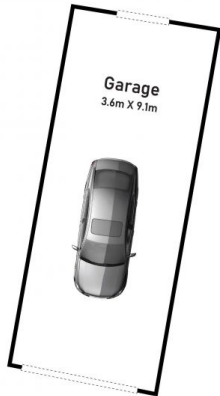
**Andrew Crowhurst**  
03 5201 0575



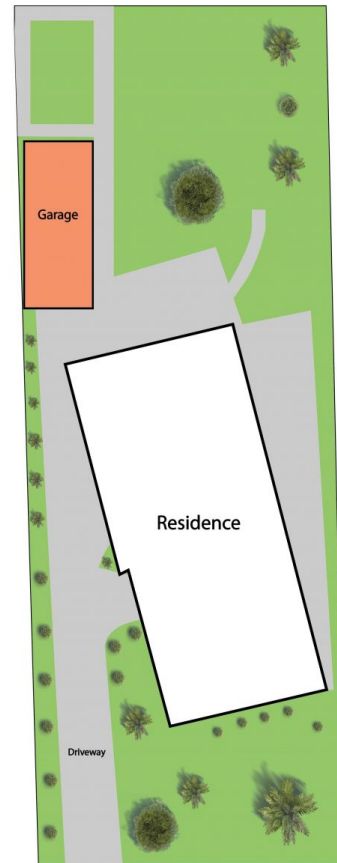
**Nicole Andrews**  
03 5201 0575

<https://www.eastwoodandrews.com.au>

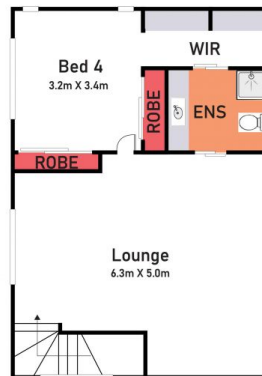
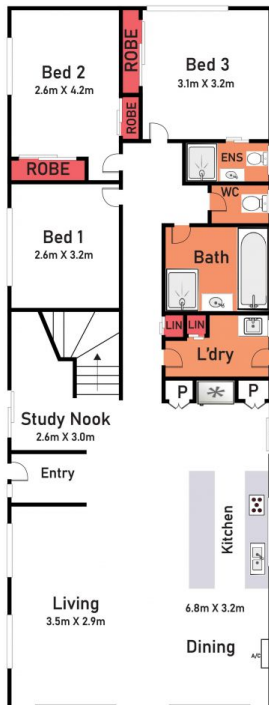
## Ground Floor



## Site Plan



## First Floor



# 31 Gwyther Road, Highton

\* Dimensions are approximate and for illustrative purposes only

