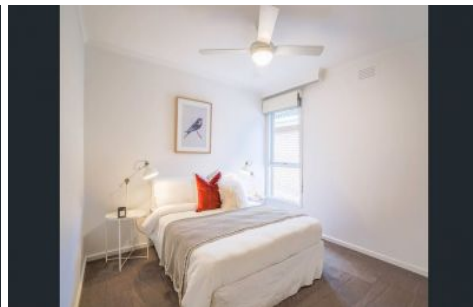




EASTWOOD ANDREWS



3/349 Pakington Street Newtown VIC

2 1 1

Wow, location could not get better than this. Amongst the shops and cafes of Pakington St, 5 minutes to Geelong CBD and 5 minutes to the train station.

Perfect for those looking for low maintenance lifestyle whilst being surrounded by all amenities. Comprises kitchen with s/s appliances and modern fittings, two spacious bedrooms with built in robes and ceiling fans, bathroom with frameless shower and heated towel rail, split system heating and cooling for all year comfort. There is a single car garage and private courtyard with established gardens and a great alfresco area.

**Land Size** : 96 sqm

**View** : <https://www.eastwoodandrews.com.au/lease/vic/geelong-district/newtown/residential/unit/6740976>



**Melanie Backer**  
03 5201 0575



**Hailey Wyld**  
03 5201 0575