



EASTWOOD ANDREWS



103 Rossack Drive Grovedale VIC

4 2 2

If quality and space are important, then this is the home for you. Well positioned in a convenient location with stunning views over Highton and beyond, you are only minutes to Waurin Ponds shopping centre, Epworth Hospital, Deakin University and within quick and easy access to the Melbourne Ring Rd.

Boasting an elegant front facade and perfectly manicured gardens, you will be impressed from the moment you pull up outside. Comprising a wide grand entrance, formal lounge and dining plus an open plan kitchen/dining/family with an abundance of natural light. The kitchen is well appointed with stone benches, plenty of cupboard space, walk in pantry, gas cooktop, electric oven and dishwasher, all overlooking the rear yard to keep an easy eye on children playing outside whilst preparing dinner.

There is a study situated at the front of the home, ideal for those who work from home, plus a powder room and

Price : \$ 1,027,000
Land Size : 691 sqm
View : <https://www.eastwoodandrews.com.au/sale/vic/geelong-district/grovedale/residential/home/6832083>



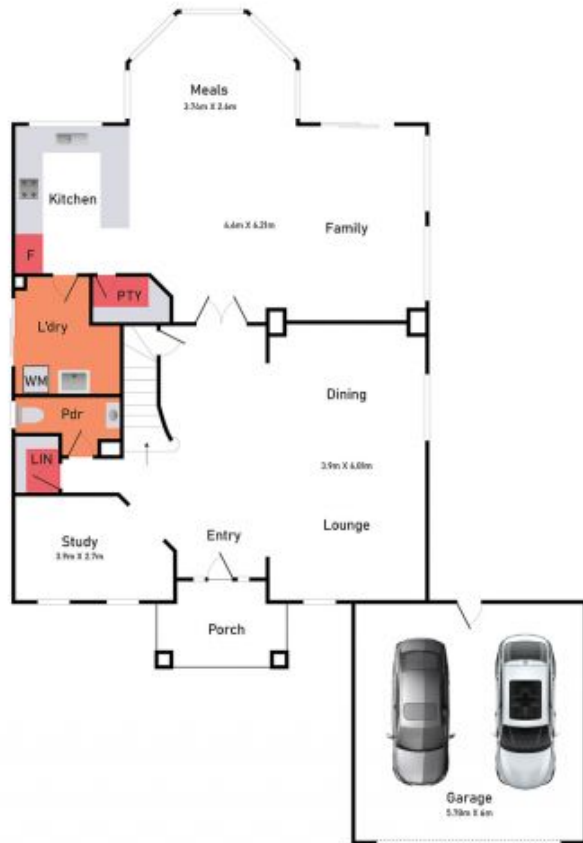
Nicole Andrews
03 5201 0575



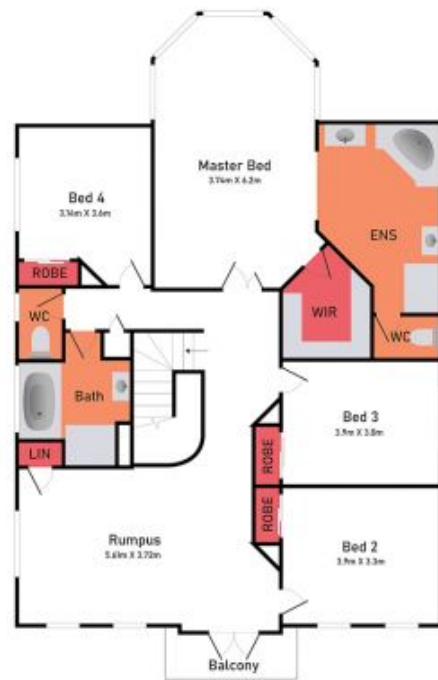
Jayden Overall
03 5201 0575

<https://www.eastwoodandrews.com.au>

Ground Floor



First Floor



103 Rossack Drive, Grovedale

* Dimensions are approximate and for illustrative purposes only

