



EASTWOOD ANDREWS



**39 Culzean Crescent Highton VIC**

4 2 2

A loved and cherished, One-owner family home set on over 700m2 in one of Highton's most sought-after locations is ready for one lucky new owner to breath fresh life into it.

The views from the light filled living area and balcony are absolutely magnificent. This 4 bed, 2 bath home has great bones with high ceilings and the original charm meticulously maintained through the 2-story layout over the years by one lovely family. Move in right now or select from many upgrade options as this home shares views from both kitchen, living and also the dining, opening directly onto the sizable balcony. Some cost-effective alterations here could easily turn this gem into your dream home. With something for all members of the family the home features 4 sizeable bedrooms, the main with an ensuite and You-Yangs views from the bedside. More features include a study area, perfect for students or those who can work

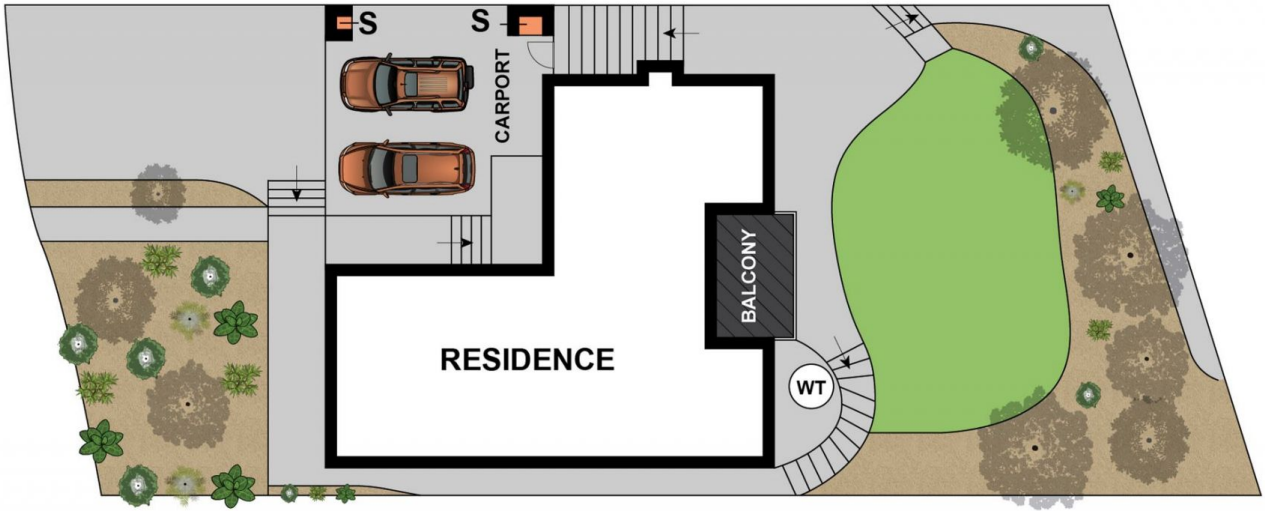
**Price** : \$ 1,020,000  
**Land Size** : 709 sqm  
**View** : <https://www.eastwoodandrews.com.au/sale/vic/geelong-district/highton/residential/house/6889768>



**Jayden Overall**  
03 5201 0575



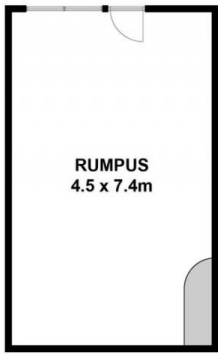
**Andrew Crowhurst**  
03 5201 0575



**SITE PLAN**

Whilst [bwrn.com.au](http://bwrn.com.au) has made every attempt to ensure the accuracy of the floor plan contained here, measurements are approximate and no responsibility is taken for any error, omission, or mis-statement. This plan is for illustrative purposes only.

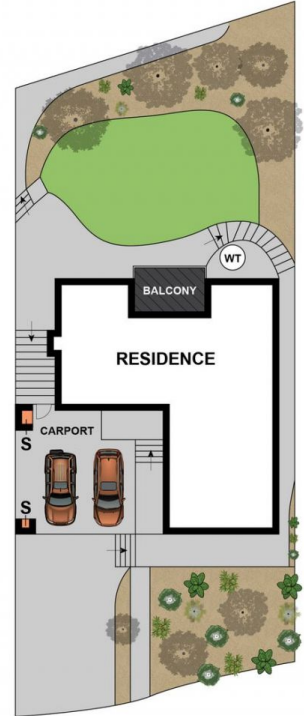
**39 Culzean Crescent, Highton**



LOWER LEVEL



GROUND LEVEL



SITE PLAN

Whilst [bwrn.com.au](http://bwrn.com.au) has made every attempt to ensure the accuracy of the floor plan contained here, measurements are approximate and no responsibility is taken for any error, omission, or mis-statement. This plan is for illustrative purposes only.

## 39 Culzean Crescent, Highton