



EASTWOOD ANDREWS



29 Townsend Road Whittington VIC

2 1 2

Positioned 15 minutes from Geelong CBD and coastal areas and 5 minutes to local schools, shops, public transport and sporting reserves the convenience to all amenities is certain to appeal to both owner occupiers and investors.

It is getting harder and harder to find properties under a price point of \$500,000 and this one is perfect for first home buyers. With character and charm, its own allotment and the affordable price point, this one can't be overlooked.

Comprising a wide entrance foyer, formal lounge with gas heater and reverse cycle air conditioner, spacious updated kitchen/dining with ample cupboard space, freestanding 900mm ss stove and dishwasher, 2 generous bedrooms each with freestanding wardrobes and a stunning renovated bathroom with oversized shower, modern vanity and eye catching lead light window.. Outdoors is a private front lawn area, side drive providing offstreet parking for

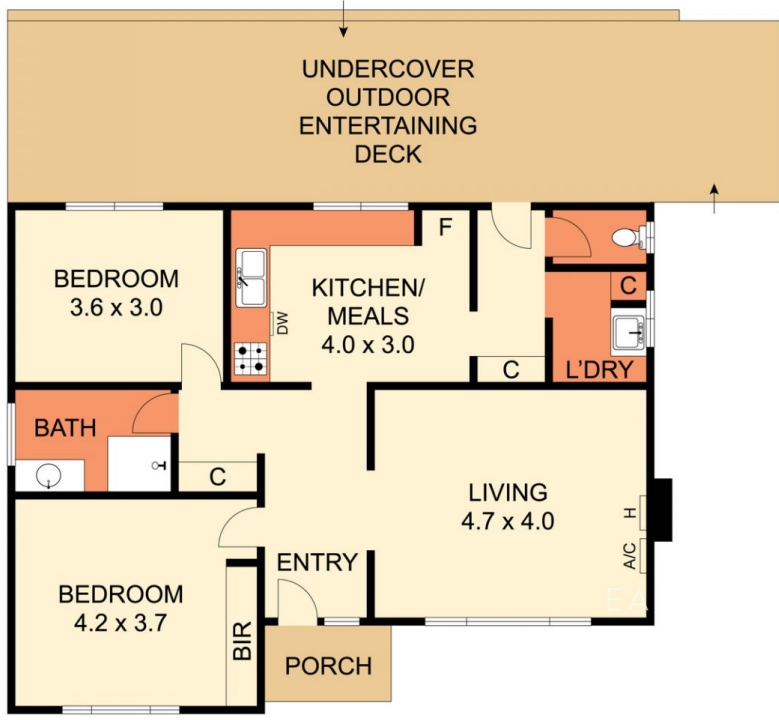
Price : \$ 460,000
Land Size : 391 sqm
View : <https://www.eastwoodandrews.com.au/sale/vic/geelong-district/whittington/residential/home/6977991>



Nicole Andrews
03 5201 0575



TL Mach
03 5201 0575



THE ABOVE PLAN IS AN ARTIST'S IMPRESSION ONLY. IT INCLUDES ELEMENTS THAT ARE FOR DISPLAY PURPOSES ONLY AND MAY NOT BE TO SCALE. LANDSCAPING SHOWN IS INDICATIVE ONLY. DIMENSIONS ARE APPROXIMATE.

