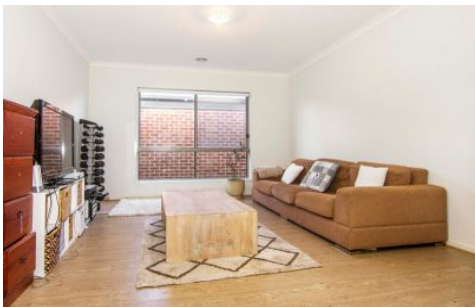




EASTWOOD ANDREWS



17 Glider Street Mount Duneed VIC

3 2 2

Presenting a fantastic opportunity to join the growing community in the ever popular and sought after Mount Duneed Estate. This spacious family home on a quiet street with a desirable North facing backyard is conveniently located 15 minutes to Geelong CBD, a quick stroll to the new Armstrong Creek Town Centre, local cafes and minutes to local schools and coastal areas.

Land Size : 399 sqm
View : <https://www.eastwoodandrews.com.au/sale/vic/geelong-district/mount-duneed/residential/house/7053016>

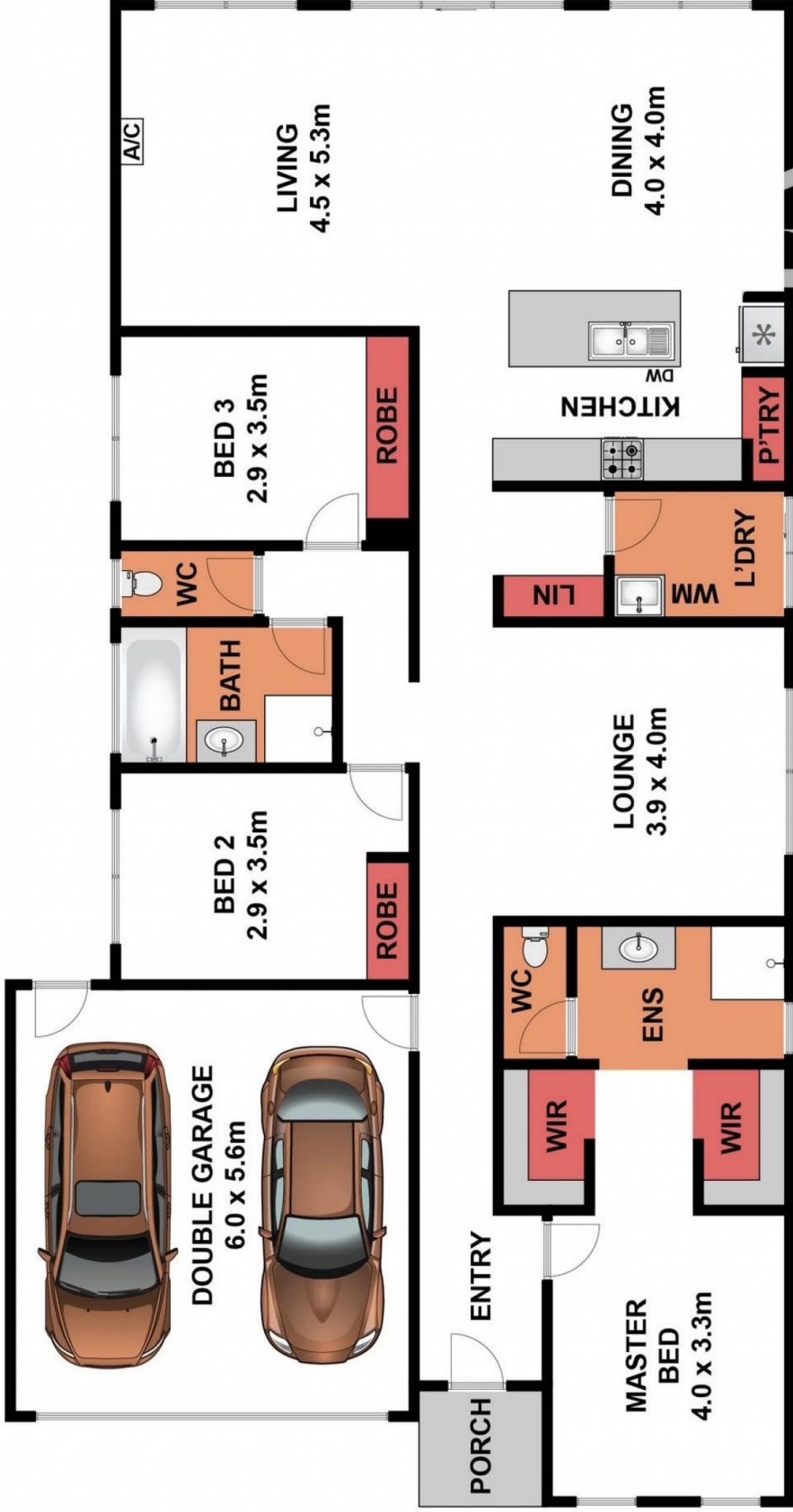
? Comprising a formal lounge plus north facing open plan kitchen/dining/living area oozing with sunlight, timber laminate flooring, s/s gas cooktop, fan forced oven and dishwasher. Sliding screen and glass doors lead to the outdoor area with a concrete pad for entertainment.



Nicole Andrews
03 5201 0575



Sarabjeet Singh
5201 0575



GROUND FLOOR

Whilst bwrm.com.au has made every attempt to ensure the accuracy of the floor plan contained here, measurements are approximate and no responsibility is taken for any error, omission, or mis-statement. This plan is for illustrative purposes only.

17 Glider Street, Mount Duneed