



EASTWOOD ANDREWS



65 Torquay Road Belmont VIC

3 1 3

Perfect opportunity in the heart of Belmont this well-presented brick home with modern features will draw your attention! Upon entry, the front lounge delivers with plantation shutters throughout, plenty of natural sunlight and room for family activity or informal celebrations.

The central kitchen features elegant white cabinetry, stainless steel appliances including electric oven, gas cooktop, dishwasher and stone island bench top. Add abundance of storage space this will impress. All this leads to large decking area which is great for entertaining.

Comprising of 3 large bedrooms all consisting of BIR's share bathroom, separate toilet and oversized study area can also be utilized as second living zone. Hydronic heating and evaporative cooling throughout is great for comfort in all seasons.

Outdoors, has low maintenance lush border of greenery with cabin style bungalow creating a private and tranquil

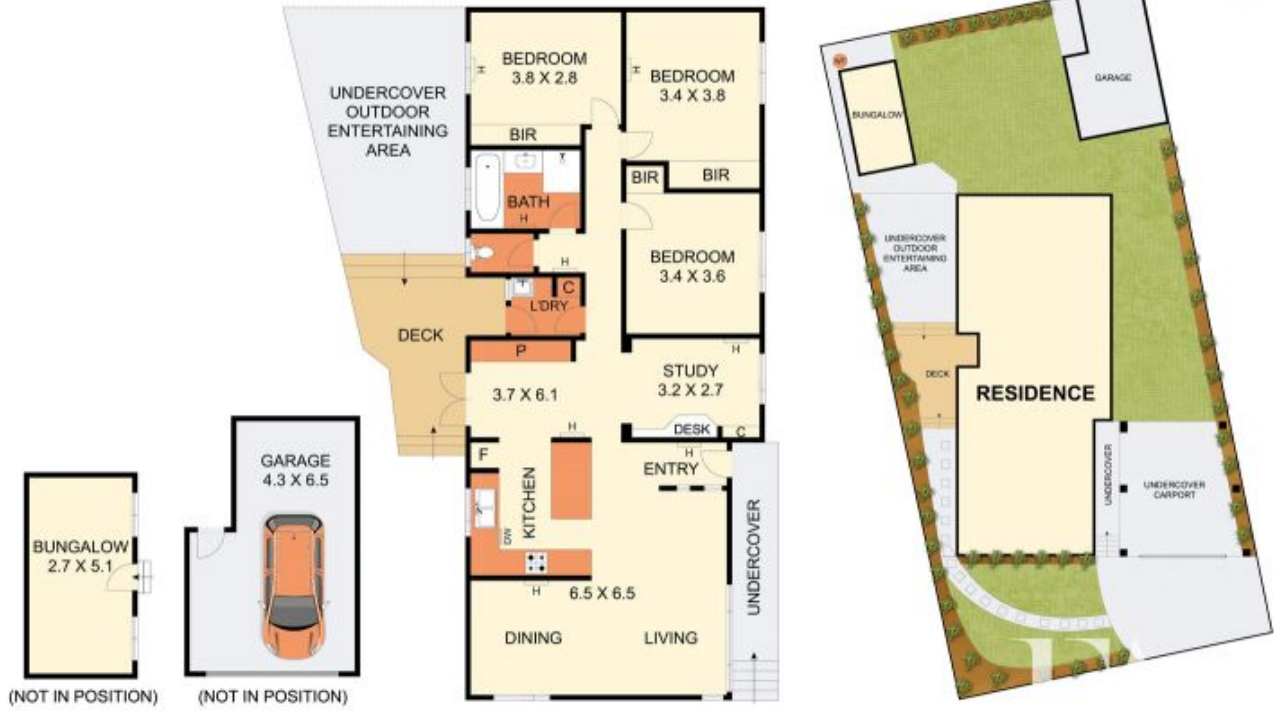
Land Size : 542 sqm
View : <https://www.eastwoodandrews.com.au/sale/vic/geelong-district/belmont/residential/house/7056553>



Stephen Thomas
03 5201 0575



Andrew Crowhurst
03 5201 0575



THE ABOVE PLAN IS AN ARTIST'S IMPRESSION ONLY. IT INCLUDES ELEMENTS THAT ARE FOR DISPLAY PURPOSES ONLY AND MAY NOT BE TO SCALE. LANDSCAPING SHOWN IS INDICATIVE ONLY. DIMENSIONS ARE APPROXIMATE.