



EASTWOOD ANDREWS



7 Cambridge Street Belmont VIC

3 1 2

7 Cambridge Street, Belmont

Investors delight! On its own title in one of Belmont's most sought-after positions, only one block from the High Street shopping precinct, this low maintenance corner block home has character, convenience and style. Boasting side access to the property from Wimmera Street with a lock-up, internal access Garage. This is an exciting opportunity for you to jump into Belmont's ever strong property market.

Currently rented out by a lovely tenant, this wonderful home has high ceilings and includes three spacious bedrooms all with built in robes. On entry, to the left you will find the front formal lounge room featuring split system heating and cooling plus ducted heating for year-round comfort.

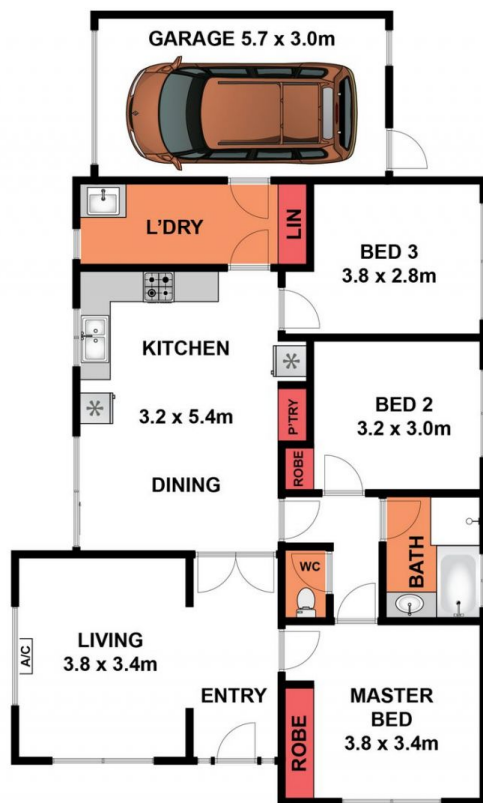
Price : \$ 585,000
Land Size : 250 sqm
View : <https://www.eastwoodandrews.com.au/sale/vic/geelong-district/belmont/residential/house/7170245>



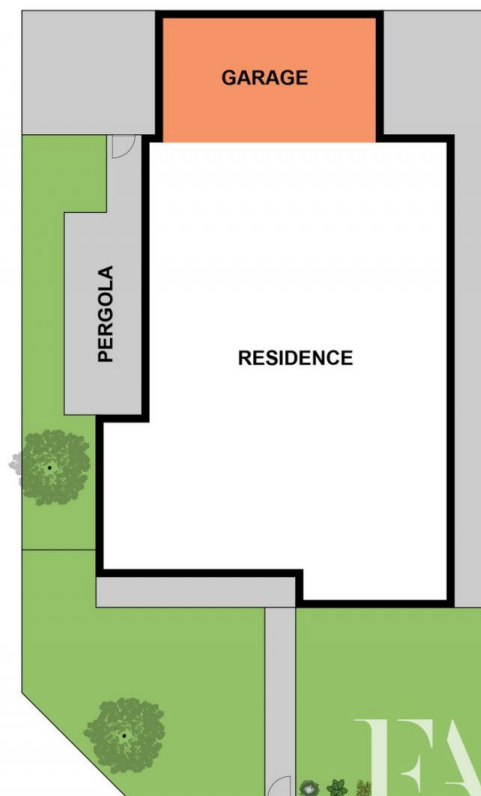
Jayden Overall
03 5201 0575



Stephen Thomas
03 5201 0575



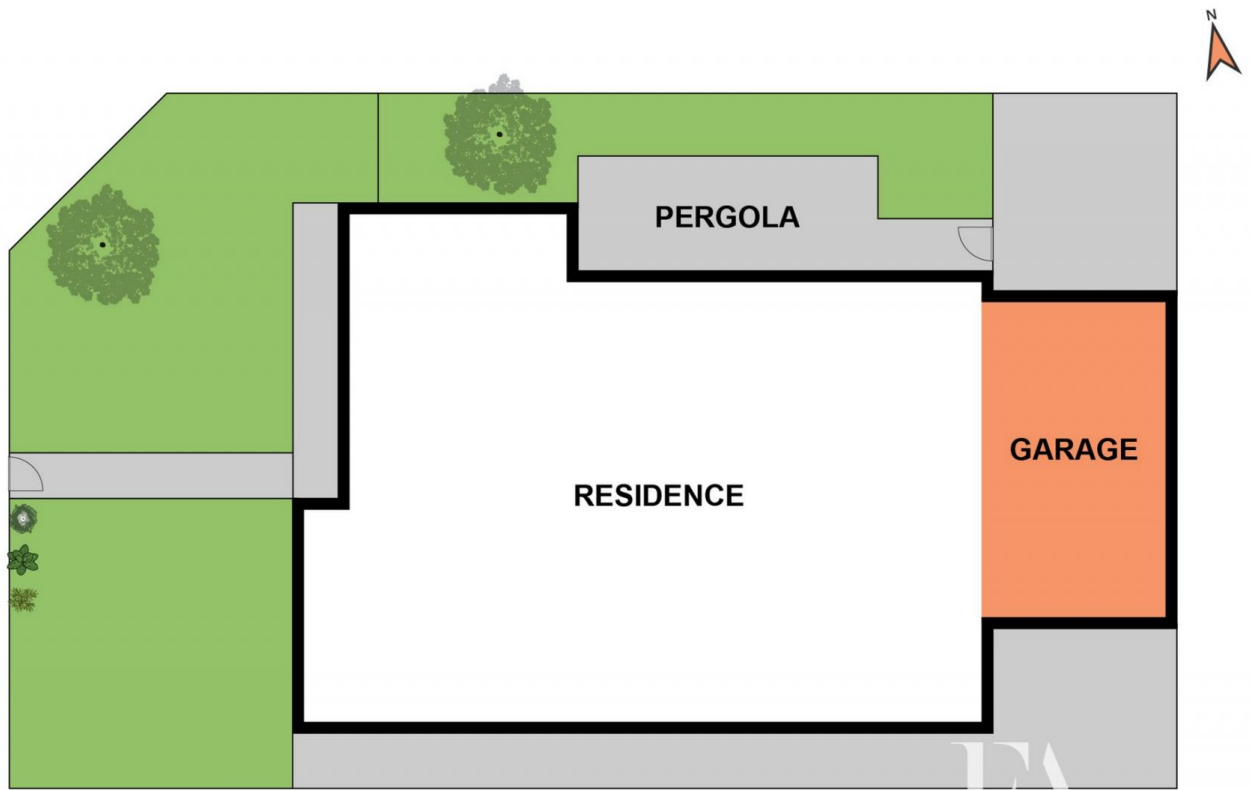
GROUND FLOOR



SITE PLAN

Whilst bwrm.com.au has made every attempt to ensure the accuracy of the floor plan contained here, measurements are approximate and no responsibility is taken for any error, omission, or mis-statement. This plan is for illustrative purposes only.

7 Cambridge Street, Belmont



SITE PLAN

Whilst bwrn.com.au has made every attempt to ensure the accuracy of the floor plan contained here, measurements are approximate and no responsibility is taken for any error, omission, or mis-statement. This plan is for illustrative purposes only.

7 Cambridge Street, Belmont

EA
EASTWOOD ANDREWS