



EASTWOOD ANDREWS



14 Zazzman Court St Albans Park VIC

4 2 2

Situated in a quiet court within close proximity to local schools, shops, public transport and sporting facilities, 10 minutes to Geelong CBD and 15 minutes to Ocean Grove, the convenience of this location is what makes this suburb so popular to families.

Features:

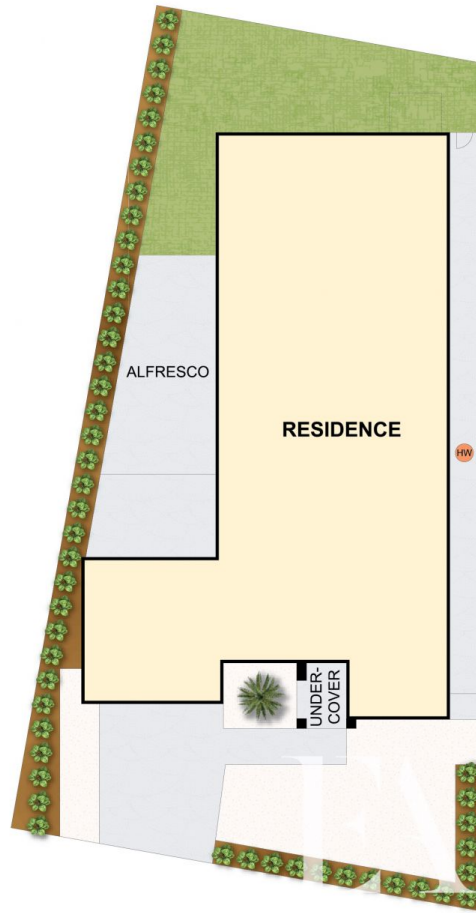
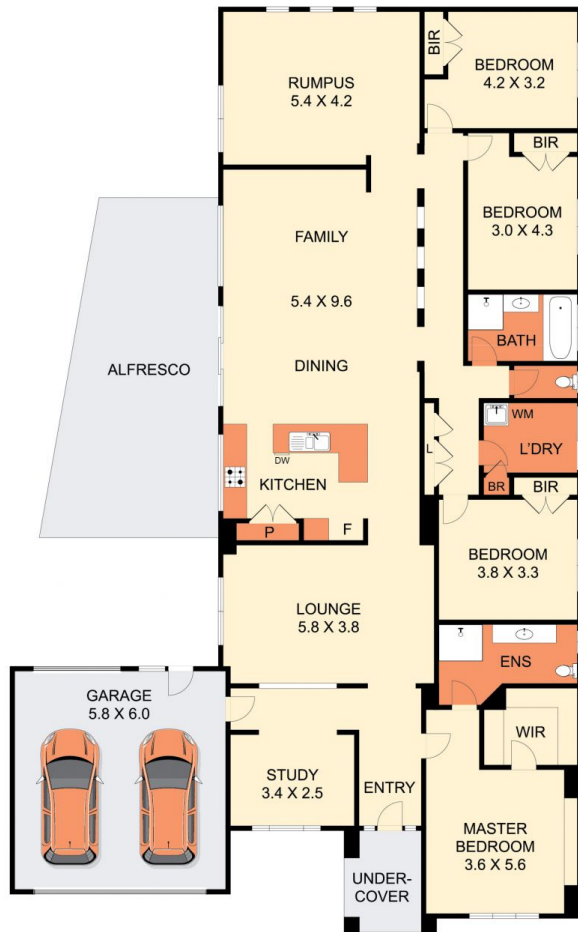
- Wide and inviting central hallway
- Approximately 34sq in total
- Formal lounge, open plan kitchen/dining/family plus a rumpus room
- Well appointed kitchen with window splashback, freestanding 900mm s/s oven, dishwasher, stone bench tops and large pantry.
- The dining area opens out through glass sliding doors to the undercover area for combined indoor/outdoor entertaining.
- 4 bedrooms, huge master zoned at the front of the home

Price : \$ 715,000
Land Size : 604 sqm
View : <https://www.eastwoodandrews.com.au/sale/vic/geelong-district/st-albans-park/residential/house/7232290>



Nicole Andrews
03 5201 0575

<https://www.eastwoodandrews.com.au>



THE ABOVE PLAN IS AN ARTIST'S IMPRESSION ONLY. IT INCLUDES ELEMENTS THAT ARE FOR DISPLAY PURPOSES ONLY AND MAY NOT BE TO SCALE. LANDSCAPING SHOWN IS INDICATIVE ONLY. DIMENSIONS ARE APPROXIMATE.