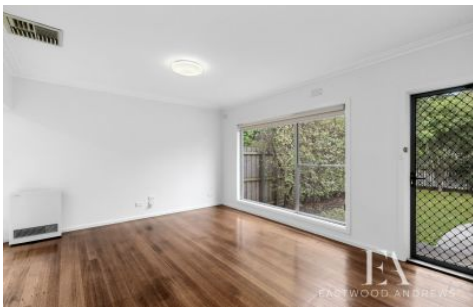




EASTWOOD ANDREWS



1/40 Helms Street Newcomb VIC

3 1 2

This is your chance to enter the Geelong property market at an affordable level in a highly sought-after position, only several minutes' drive from the Geelong CBD and waterfront! This charming, low maintenance, light filled family home will appeal to first home buyers, downsizers, and investors alike.

Price : \$ 475,000
Land Size : 343 sqm
View : <https://www.eastwoodandrews.com.au/sale/vic/geelong-district/newcomb/residential/house/7370418>

A classic home with character and amazing potential, move in and live comfortably right away or renovate to modernise as you please (STCA) Comprising of beautiful polished hard wood floors, decorative features, 3 great sized & well carpeted bedrooms with block out blinds (2 with built in robes) plus spacious kitchen/ dining area complete with gas appliances. The central living area gets the beautiful morning sun and features a Rinnai heater plus Ducted cooling throughout for year-round comfort. Down the hall is the bathroom which boasts an updated vanity, stylish claw

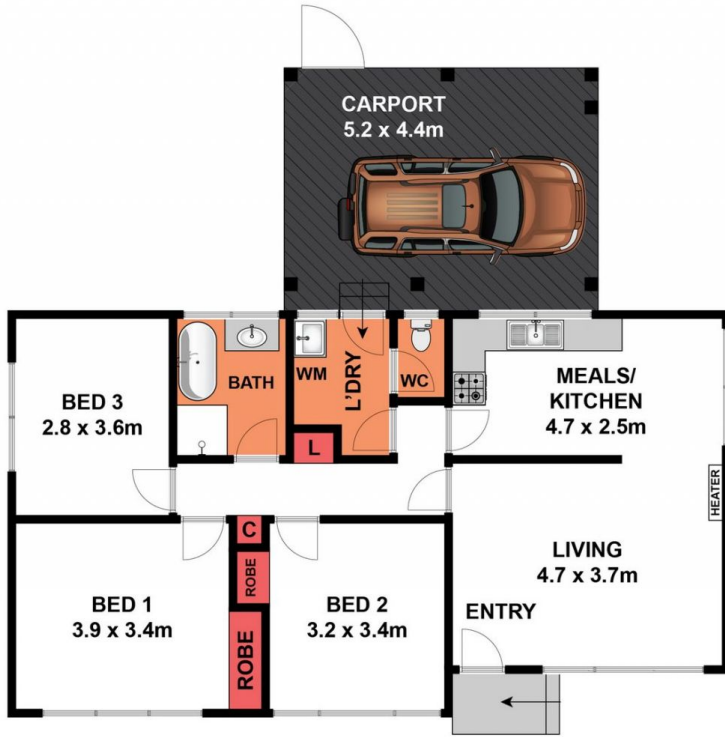


Jayden Overall
03 5201 0575



Nicole Andrews
03 5201 0575

<https://www.eastwoodandrews.com.au>



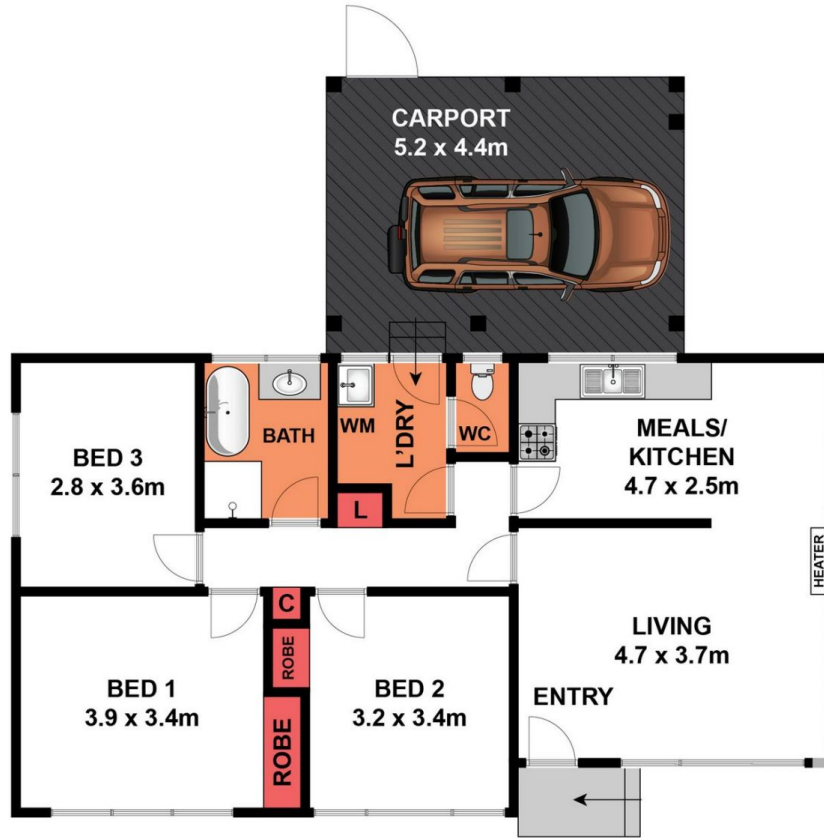
GROUND FLOOR



SITE PLAN

Whilst bwrn.com.au has made every attempt to ensure the accuracy of the floor plan contained here, measurements are approximate and no responsibility is taken for any error, omission, or mis-statement. This plan is for illustrative purposes only.

1/40 Helms Street, Newcomb



GROUND FLOOR

Whilst bwrn.com.au has made every attempt to ensure the accuracy of the floor plan contained here, measurements are approximate and no responsibility is taken for any error, omission, or mis-statement. This plan is for illustrative purposes only.

1/40 Helms Street, Newcomb