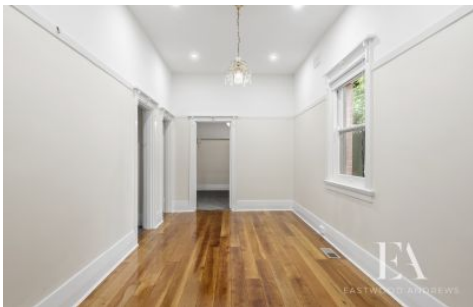




EASTWOOD ANDREWS



315 Moorabool Street Geelong VIC

3 1 2

Hear the cheers from GMHBA Stadium! A truly unique a rare CBD offering just waiting for the right buyer.

This double fronted, solid brick period home is the perfect opportunity to secure a slice of Central Geelong, a short stroll to the train station and across the road from GMHBA Stadium. Featuring period features of yesteryear, large rooms and the potential to further enhance, improve or extend the home, being on 415m² (approx.)

What you'll love!

-3 bedrooms with the option to turn the main into a large main living area.

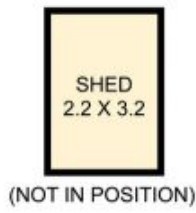
-The spacious foyer area on entry, design and decorate to make an impressive first impression on guests. This space

Price : \$849,000 - \$899,000
Land Size : 415 sqm
View : <https://www.eastwoodandrews.com.au/sale/vic/geelong-district/geelong/residential/house/7423926>



Jayden Overall
03 5201 0575

<https://www.eastwoodandrews.com.au>



THE ABOVE PLAN IS AN ARTIST'S IMPRESSION ONLY. IT INCLUDES ELEMENTS THAT ARE FOR DISPLAY PURPOSES ONLY AND MAY NOT BE TO SCALE. LANDSCAPING SHOWN IS INDICATIVE ONLY. DIMENSIONS ARE APPROXIMATE.