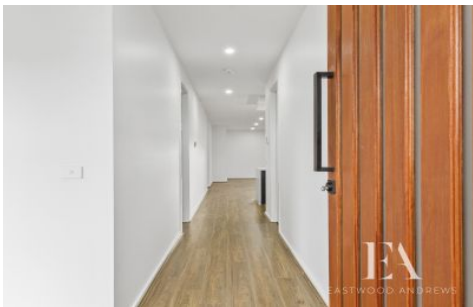




EASTWOOD ANDREWS



## 12 Harrington Terrace St Leonards VIC

4 2 2

Situated only a walking distance from the beach & town centre, This may be the elusive family home in Seachange Estate that you've been searching for.

### Features:

- Large open plan kitchen/dining/family area.
- The kitchen provides plenty of storage space, 40mm stone bench top with waterfall edge, 900mm s/s stove, hanging pendants lights, dishwasher and walk in pantry.
- The family area leads to outdoor entertaining area and low maintenance backyard.
- Formal lounge. located at the front of the property.
- 4 generous-sized bedrooms, master with walk in robe and Ensuite and the remaining 3 bedrooms all have spacious built-in robes.
- A dedicated space allocated for study room forms an efficient home office.

**Price** : \$ 690,000

**View** : <https://www.eastwoodandrews.com.au/sale/vic/geelong-district/st-leonards/residential/house/7605289>

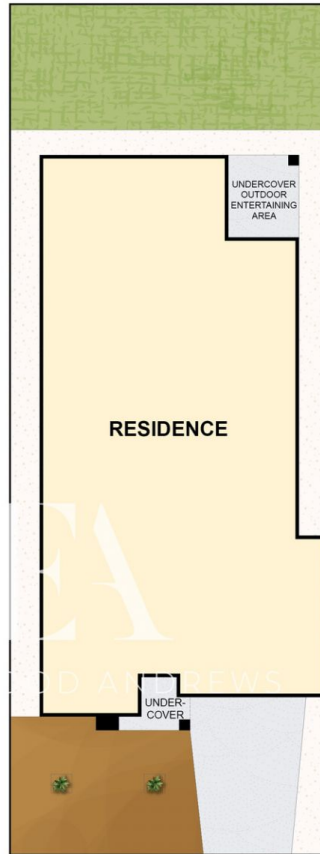
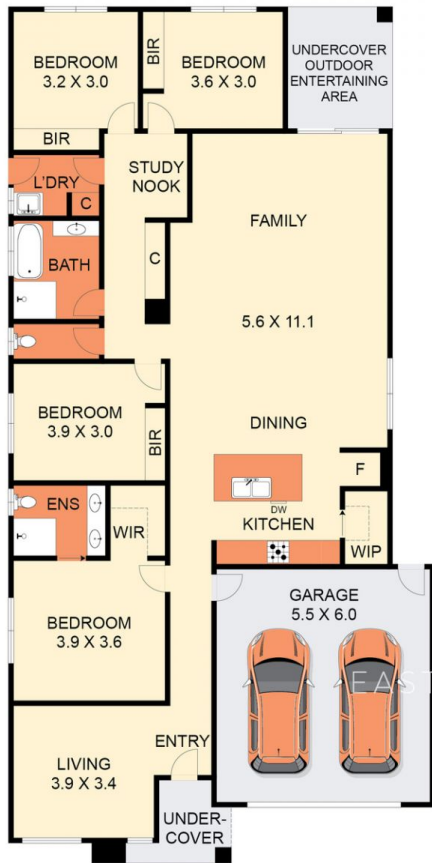


**Sarabjeet Singh**  
5201 0575



**Nicole Andrews**  
03 5201 0575

<https://www.eastwoodandrews.com.au>



THE ABOVE PLAN IS AN ARTIST'S IMPRESSION ONLY, IT INCLUDES ELEMENTS THAT ARE FOR DISPLAY PURPOSES ONLY AND MAY NOT BE TO SCALE. LANDSCAPING SHOWN IS INDICATIVE ONLY. DIMENSIONS ARE APPROXIMATE.