



EASTWOOD ANDREWS



30 Shoaling Drive Leopold VIC

4 2 2

Situated in the Estuary Estate within minutes to Gateway plaza shops and cafes, Leopold primary school, walking distance to parkland and public transport and only 15 minutes to Geelong CBD and coastal areas this property offers a versatile floorplan and spacious living in a very convenient position.

Features:

- Central tiled hallway
- Formal lounge at the front of the home which could also be utilised as a home office or 5th bedroom if required.
- Large open plan kitchen/meals/family with sliding doors opening out to the undercover entertainment area and overlooking the rear yard.
- Well appointed kitchen with stone benchtops, tiled splashback, new s/s gas

Price : \$ 636,000
Land Size : 448 sqm
View : <https://www.eastwoodandrews.com.au/sale/vic/geelong-district/leopold/residential/house/7681498>

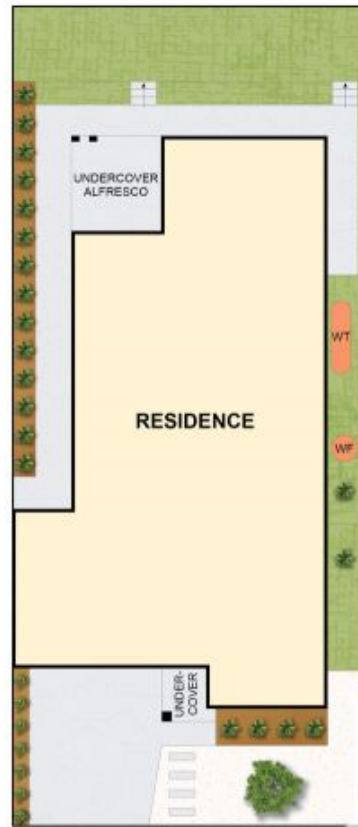


Nicole Andrews
03 5201 0575



Sarabjeet Singh
5201 0575

<https://www.eastwoodandrews.com.au>



THE ABOVE PLAN IS AN ARTIST'S IMPRESSION ONLY. IT INCLUDES ELEMENTS THAT ARE FOR DISPLAY PURPOSES ONLY AND MAY NOT BE TO SCALE. LANDSCAPING SHOWN IS INDICATIVE ONLY. DIMENSIONS ARE APPROXIMATE.