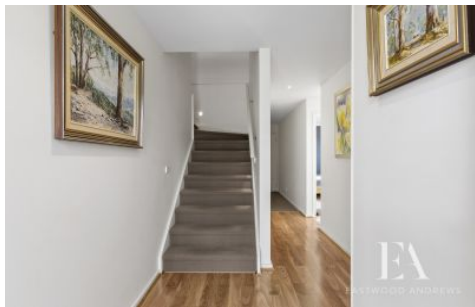




EASTWOOD ANDREWS



98 Grantham Drive Highton VIC

4 2 2

Set in a commanding position with views to the Barrabool Hills, this home offers affordable entry to the coveted Province Estate. Less than 10 years old the spacious home features 3 large bedrooms downstairs, a living room (or 5th bedroom) and the 2 way family bathroom can be accessed via front bedroom, creating a second ensuite. The upstairs Master bedroom creates a retreat away from the kids with open plan living with views and chefs kitchen with Stone Benches and great storage with walk in Pantry. On the ground floor the 2nd living room opens to private yard (with side access could be a great work from home or small business space). The remote double garage is secure with direct internal access. This home is ready made for a growing family, professional couples or investors alike with bus stop moments away, parkland and walking tracks nearby plus Barrabool Hills Shopping Centre. Save time building and move straight in. 60 day settlement available.

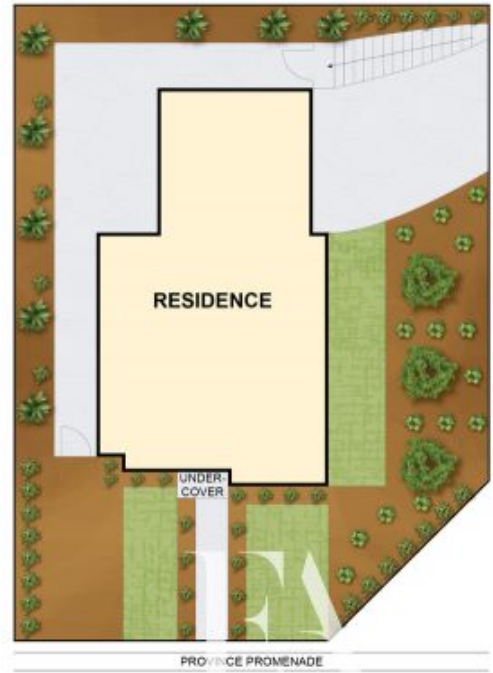
Price : \$800,000 - \$880,000
Land Size : 416 sqm
View : <https://www.eastwoodandrews.com.au/sale/vic/geelong-district/highton/residential/house/7802924>



Stephen Thomas
03 5201 0575



Andrew Crowhurst
03 5201 0575



THE ABOVE PLAN IS AN ARTIST'S IMPRESSION ONLY. IT INCLUDES ELEMENTS THAT ARE FOR DISPLAY PURPOSES ONLY AND MAY NOT BE TO SCALE. LANDSCAPING SHOWN IS INDICATIVE ONLY. DIMENSIONS ARE APPROXIMATE.