



EASTWOOD ANDREWS



16 Bellagio Court Whittington VIC

2  1  2 

Nestled at the end of a quiet court, enjoy a life away from the hustle and bustle of city living. This attractive home offers a wide entry, with 2 large bedrooms off to the right, both with robes and the main accessing the 2 way bathroom (just like an ensuite). The spacious open plan living has excellent natural light and the well appointed U-Shape kitchen adjoins the meals area. There's sliding door access to a covered alfresco area and securely fenced yard with established gardens and lawns.. The split system Air-Con provides comfort for both summer and winter. There's secure internal access to the spacious double garage and there's a garden shed in the rear. The lot size is 454m².

All this located just minutes to Newcomb Shops, Geelong CBD, Leopold and the Bellarine and public transport just 5 minutes walk.

Call today for more information.

Land Size : 454 sqm

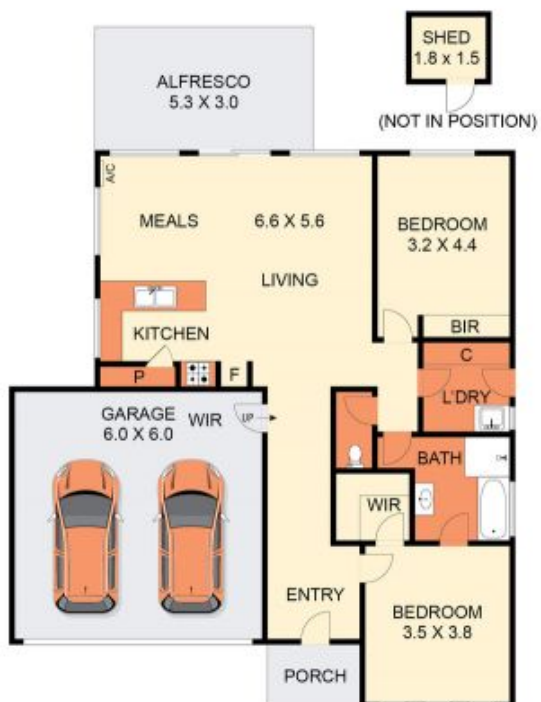
View : <https://www.eastwoodandrews.com.au/sale/vic/geelong-district/whittington/residential/homeuse/7875920>



Andrew Crowhurst
03 5201 0575



Jayden Overall
03 5201 0575



THE ABOVE PLAN IS AN ARTIST'S IMPRESSION ONLY. IT INCLUDES ELEMENTS THAT ARE FOR DISPLAY PURPOSES ONLY AND MAY NOT BE TO SCALE.
LANDSCAPING SHOWN IS INDICATIVE ONLY. DIMENSIONS ARE APPROXIMATE.