



EASTWOOD ANDREWS



5 Englewood Court Belmont VIC

3 1 1

Here's a solid investment in a quiet court just off Kidman Avenue and with easy access to High Street and Surfcoast Hwy. Set on 623m² allotment with a northerly aspect, the sound brick veneer home is spacious throughout with formal entry, L-Shaped lounge dining area with beautiful timber floors. The renovated galley style kitchen has good bench space and storage, new SS appliances with good natural light. 3 large bedrooms have robes and share the stunning updated bathroom, walk in shower and bath plus a separate laundry & toilet. Year round comfort is assured with ducted heated & cooling. There's a sunny deck at the rear with access to the private and secure backyard with established trees and gardens. There's a single lock up garage at the rear with driveway access. Call today for more information.

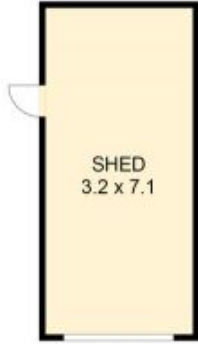
Type : House
Land Size : 623 sqm
View : <https://www.eastwoodandrews.com.au/sale/vic/geelong-district/belmont/residential/house/7912938>



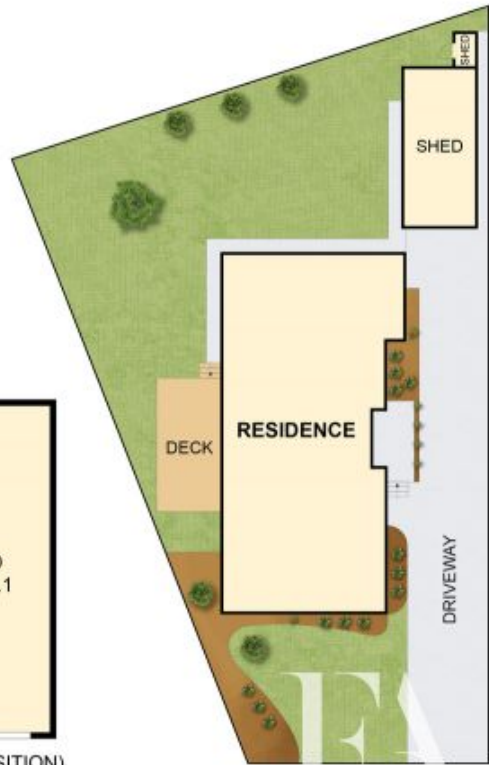
Andrew Crowhurst
03 5201 0575

[For full version visit the website](https://www.eastwoodandrews.com.au)

<https://www.eastwoodandrews.com.au>



(NOT IN POSITION)



THE ABOVE PLAN IS AN ARTIST'S IMPRESSION ONLY. IT INCLUDES ELEMENTS THAT ARE FOR DISPLAY PURPOSES ONLY AND MAY NOT BE TO SCALE. LANDSCAPING SHOWN IS INDICATIVE ONLY. DIMENSIONS ARE APPROXIMATE.