



EASTWOOD ANDREWS



16 Robertson Street Thomson VIC

4 2 2

Truly a rarity, this luxurious home has something to offer the whole family. Stylishly renovated with a modern ambience and versatile floorplan, this home is undoubtedly the best value property in the area.

Features:

- Large living area with soaring ceilings and multiple skylights ensuring the most utilised family area is flooded with natural light.
- Well appointed kitchen with adjoining dining area with caesar stone benchtops, stainless steel 900 mm freestanding stove and dishwasher.
- Four bedrooms plus a study, two with built in robes, master with large walk in robe.
- Two tastefully renovated bathrooms

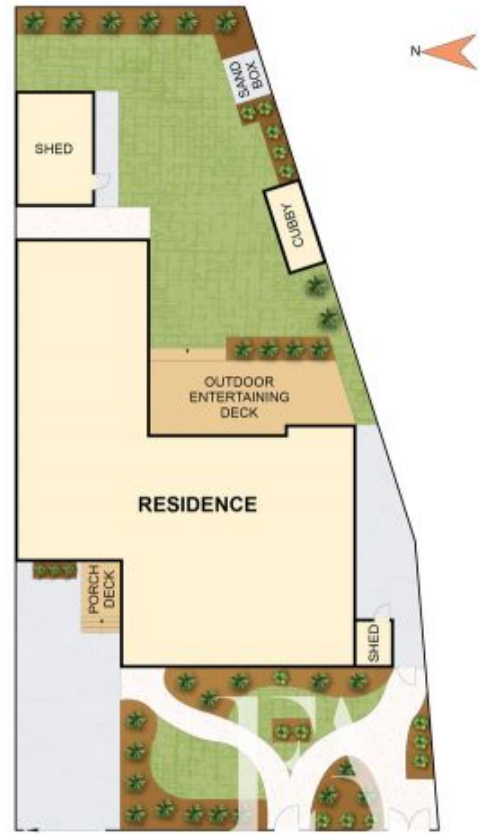
Land Size : 581 sqm
View : <https://www.eastwoodandrews.com.au/sale/vic/geelong-district/thomson/residential/house/7920516>



Nicole Andrews
03 5201 0575



Andrew Crowhurst
03 5201 0575



THE ABOVE PLAN IS AN ARTIST'S IMPRESSION ONLY. IT INCLUDES ELEMENTS THAT ARE FOR DISPLAY PURPOSES ONLY AND MAY NOT BE TO SCALE. LANDSCAPING SHOWN IS INDICATIVE ONLY. DIMENSIONS ARE APPROXIMATE.