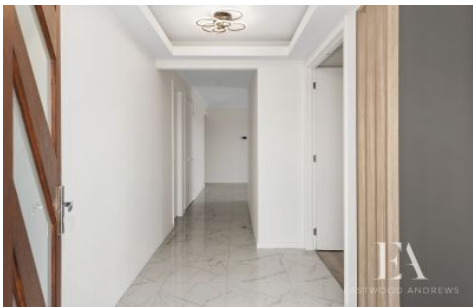




EASTWOOD ANDREWS



18 Woolman Street Lara VIC

4 2 2

Welcome to this exquisite brand-new custom build, a luxurious residence with unique aftermarket add-ons that exude sophistication and individuality. Spanning an impressive 422m² approximately, this home is a testament to quality and style.

Price : Brand New & Ready to Move in \$729,000-\$769,000

View : <https://www.eastwoodandrews.com.au/sale/vic/geelong-district/lara/residential/house/7935759>

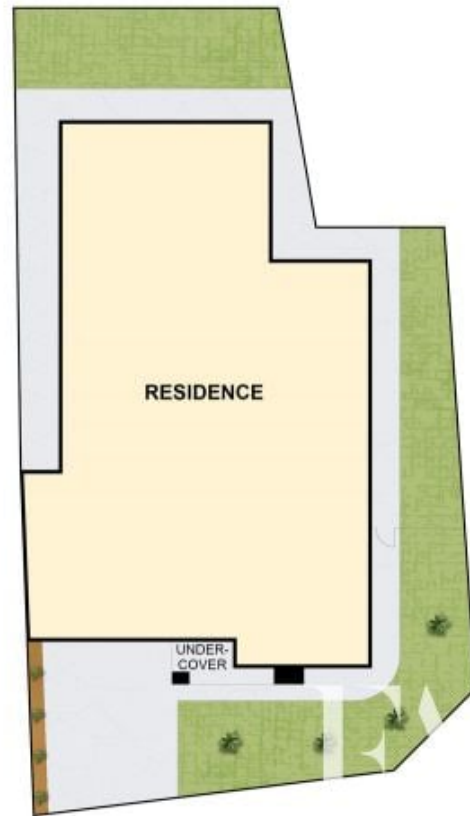
Upon entering, the high, layered ceilings, stunning marble-style tiles, and elegant chandeliers immediately set the tone for refined living. The front right of the home boasts a sunlit living area, seamlessly connected to the open-plan living, dining, and kitchen spaces that open up to the rear alfresco. The gourmet kitchen is a chef's delight, featuring stone benches, an island bench, walk-in pantry, 900mm gas cooktop/oven, and a dishwasher (to be installed prior to occupancy). Custom timber cabinetry, glass splashback, and an ornate electric fireplace integrated into a feature wall elevate the overall aesthetic.



Sarabjeet Singh
5201 0575



Jayden Overall
03 5201 0575



THE ABOVE PLAN IS AN ARTIST'S IMPRESSION ONLY. IT INCLUDES ELEMENTS THAT ARE FOR DISPLAY PURPOSES ONLY AND MAY NOT BE TO SCALE. LANDSCAPING SHOWN IS INDICATIVE ONLY. DIMENSIONS ARE APPROXIMATE.