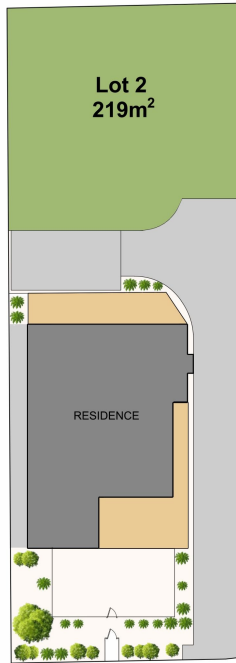




EASTWOOD ANDREWS

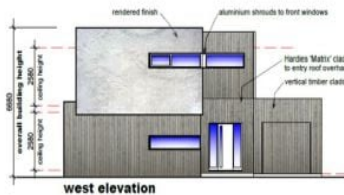
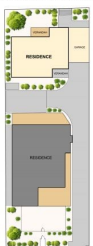
2/59 BRAYSHAY ROAD, NEWCOMB



Disclaimer: The above plan is an artist's impression only. It includes elements that are for display purposes only and may not be to scale. Landscaping shown is indicative only. Dimensions are approximate.



2/59 BRAYSHAY ROAD, NEWCOMB



2/59 Brayshay Road Newcomb VIC

Set on its own title and on approximately 219 square metres with a shared driveway, this subdivided allotment invites you to create a retreat to suit your lifestyle or take advantage of the stunning contemporary building plans already approved by the City of Greater Geelong Council for a double-storey, two bedroom, two-bathroom townhouse with rumpus room.

Located on serene Brayshay Road, Newcomb, with Newcomb and Bellarine shopping centres and local schools within easy walking distance and Geelong's CBD, the hospital precinct, Eastern Beach waterfront and Geelong and South Geelong train stations only five minutes' drive away, the location sells itself.

Ideal for the downsizer looking to build the home they always wanted, first home buyers seeking to take advantage of government building grants or a savvy investor who knows how hard it is to find precious land so

Price : \$199,000 - \$218,000
Land Size : 219 sqm
View : <https://www.eastwoodandrews.com.au/sale/vic/geelong-district/newcomb/residential/land/7984767>



Nicole Andrews
03 5201 0575



Jayden Overall
03 5201 0575