



EASTWOOD ANDREWS



### 17 Schmitt Court Whittington VIC

3 1 4

With stylish modern updates, the huge yard & double garage have this one ticking all the boxes! Set in the wide, quiet and tightly held Schmitt Court, step into comfortable family living in this fully renovated gem. Exuding quality & ample space, this home is move-in ready, leaving you with nothing to do but unpack & unwind. As you approach, the private front yard welcomes you with side access to undercover parking & a double garage. The low-maintenance, nicely landscaped garden & inviting decking set the tone for what lies within.

Enter into a neatly tiled foyer leading to a spacious, light-filled formal living area. Ducted heating, split-system heating & cooling ensure year-round comfort, complemented by block-out blinds, fresh carpeting, & a modern neutral colour palette throughout. Step into the heart of the home with the beautifully renovated kitchen &

**Price** : \$569,000 - \$599,000  
**Land Size** : 624 sqm  
**View** : <https://www.eastwoodandrews.com.au/sale/vic/geelong-district/whittington/residential/home/7985116>



**Jayden Overall**  
03 5201 0575



**Nicole Andrews**  
03 5201 0575

<https://www.eastwoodandrews.com.au>

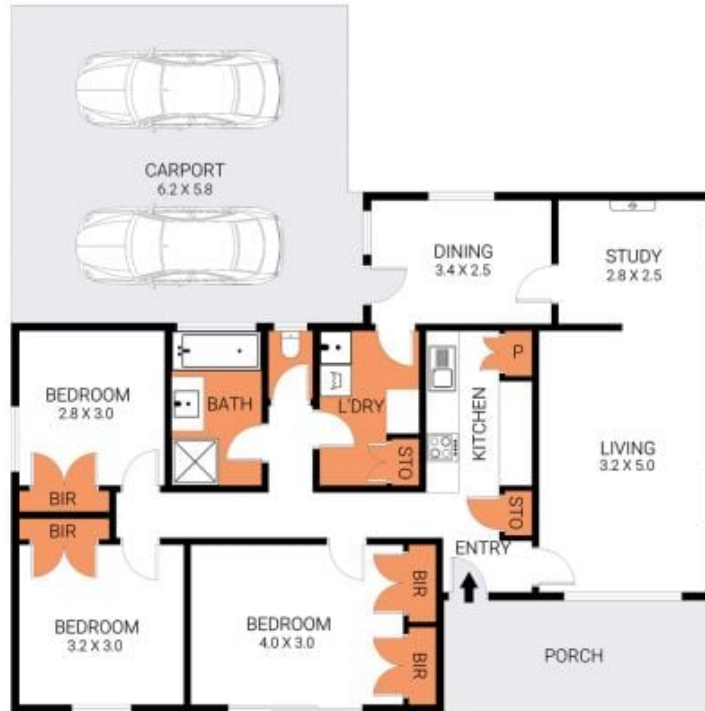


17 Schmitt Court,  
Whittington



EASTWOOD ANDREWS

59 Kilgour Street Geelong 3220 | 03 5201 0575 | www.eastwoodandrews.com.au



Disclaimer: Please note plans are indicative only and not drawn to exact scale. All dimensions & locations are approximate. Potential buyers should view the property in person.  
Plan by ABODE Productions - [www.abodeproductions.com.au](http://www.abodeproductions.com.au)