



EASTWOOD ANDREWS



### 24 Roslyn Road Belmont VIC

3 2 1

This low maintenance townhouse on it's own title is perfectly positioned in the heart of Belmont. Surrounded by an array of amenities, this great location has you within walking distance to the High St shopping strip, Barwon river walking tracks and in fantastic school zones.

With easy access to public transport, this modern townhouse comprises of 3 good sized bedrooms - master with ensuite and walk in robe. Light filled open plan kitchen, living and dining zone which overlooks the undercover alfresco area, a private and secure front yard and oversized single car garage.

? Spacious light filled family room with split system heating & cooling , ducted heating and sliding door access to the

[For full version visit the website](https://www.eastwoodandrews.com.au)

**Type** : Townhouse  
**Price** : \$649,000 - \$699,000  
**Land Size** : 342 sqm  
**View** : <https://www.eastwoodandrews.com.au/sale/vic/geelong-district/belmont/residential/townhouse/8202159>

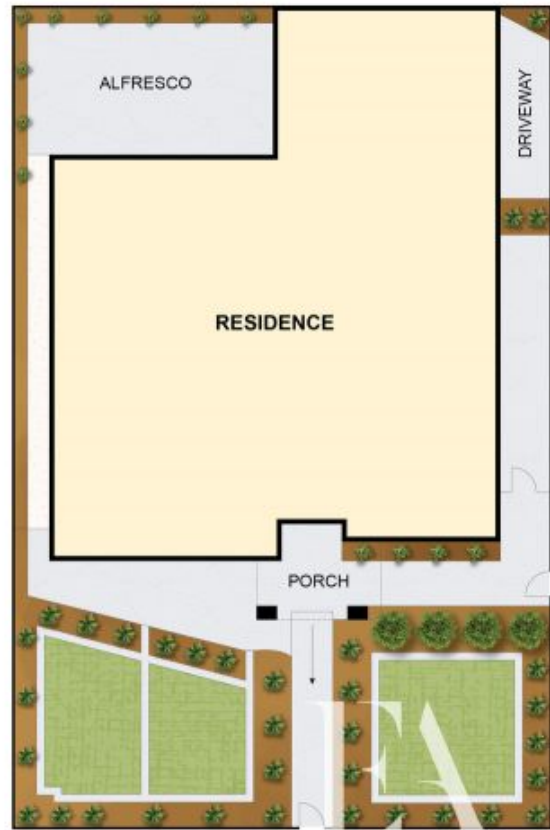
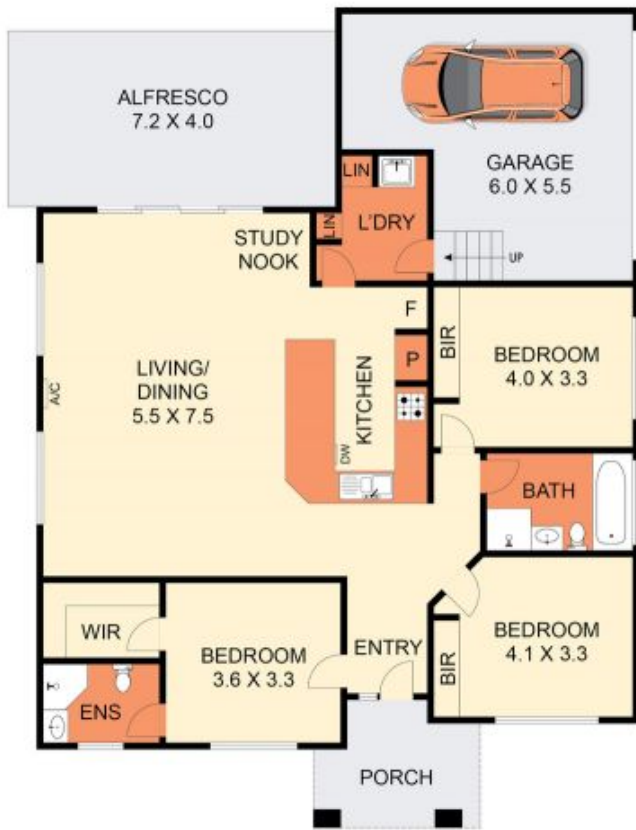


**Nicole Andrews**  
03 5201 0575



**Nyree Cartwright**  
03 5201 0575

<https://www.eastwoodandrews.com.au>



THE ABOVE PLAN IS AN ARTIST'S IMPRESSION ONLY. IT INCLUDES ELEMENTS THAT ARE FOR DISPLAY PURPOSES ONLY AND MAY NOT BE TO SCALE. LANDSCAPING SHOWN IS INDICATIVE ONLY. DIMENSIONS ARE APPROXIMATE.