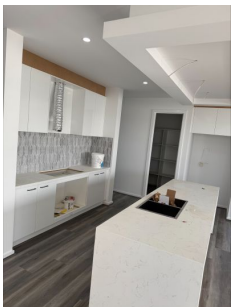




EASTWOOD ANDREWS



90 Wattlebird Drive Lara VIC

4 2 2

SAVE ON STAMP DUTY BY SECURING THIS UNDER-CONSTRUCTION PROPERTY NOW...!!!

Discover your dream home in the prestigious Lara Lakes Estate, offering the perfect blend of modern luxury and family-friendly living. Set on a generous 505m² block, this under-construction property features a thoughtfully designed layout with four spacious bedrooms and three versatile living areas, ensuring comfort and functionality for the whole family. The heart of the home is the stunning kitchen, complete with a walk-in pantry, stone benchtops, and abundant storage, ideal for creating meals and memories.

Both bathrooms are beautifully finished with floor-to-ceiling tiles, with the master ensuite boasting a dual vanity for

[For full version visit the website](#)

Type : Land
Price : \$800,000-\$850,000
Land Size : 505 sqm
View : <https://www.eastwoodandrews.com.au/sale/vic/geelong-district/lara/residential/land/8202170>



Sarabjeet Singh
5201 0575

<https://www.eastwoodandrews.com.au>